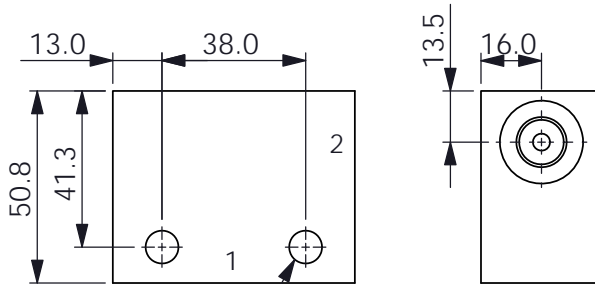
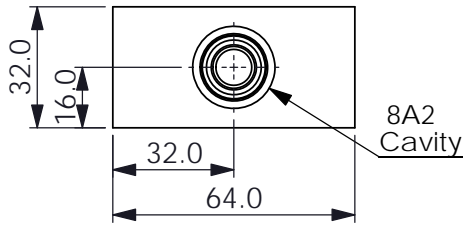
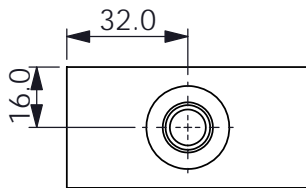


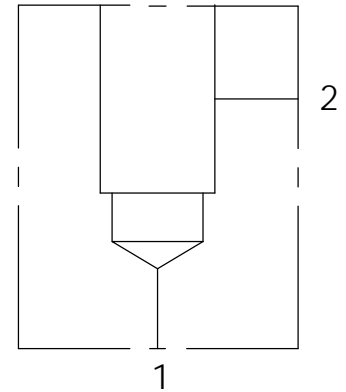
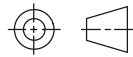
Ordering Code: **ML-8A2-X-Y 01-Z**



Mounting Holes:
Ø8.7mm. diameter
through hole
2 places.



UNIT:mm



TECHNICAL DATA

Aluminum Body Pressure Rating: 210 bar
Ductile Iron Body Pressure Rating: 350 bar

Cavity:

Refer to 8A2

* Refer to Winner Cartridge Valves Catalog.

Aluminum	0.25 kg(WITHOUT VALVES)
Ductile Iron	0.7 kg(WITHOUT VALVES)

* If you need the special specification.
Please contact us.

PORT SIZE

X	PORT		
	1	2	
G02	G 1/4"	G 1/4"	

Y BODY MATERIAL

A HIGH-STRENGTH ALUMINUM

S DUCTILE IRON

Z CARTRIDGE VALVES SELECTION

WITHOUT VALVE

RB0A RB8A20AL(10 LPM,1.7~210 bar)

PRBDA PRB8A2DAN(1 LPM,20~210 bar)

The selection is only example. Please refer to Winner Cartridge Program and to select the appropriate valves and manifolds assembly in accordance with request function (flow 、 pressure 、 ... etc.)