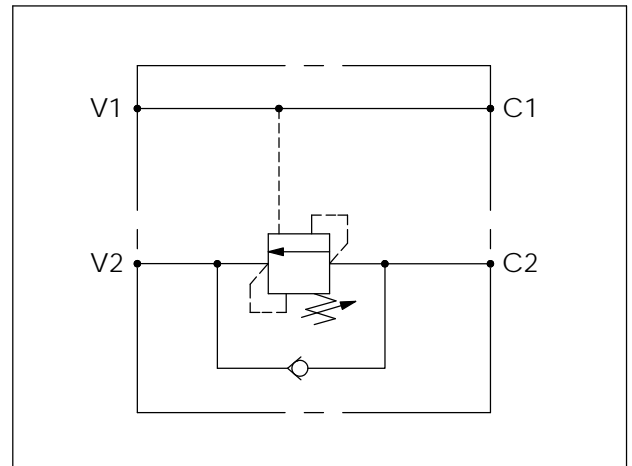
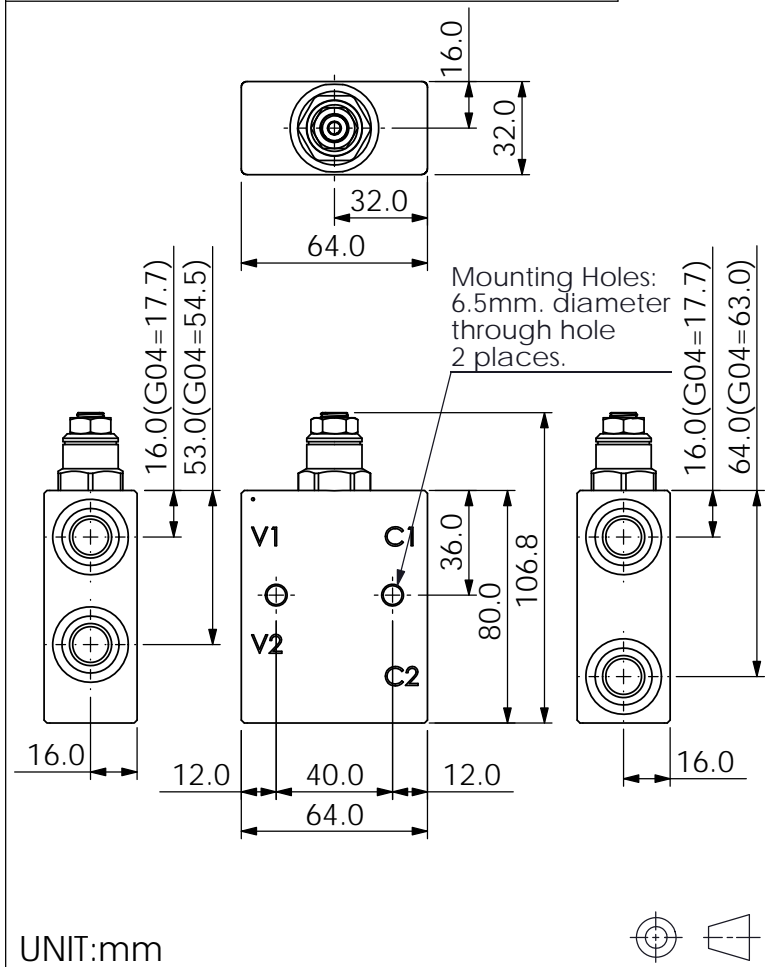


Ordering Code: **ML-11A3-X-Y 02-Z**
 Stack Height : 32.0mm



TECHNICAL DATA

Aluminum Body Pressure Rating: 250 bar
 Ductile Iron Body Pressure Rating: 350 bar

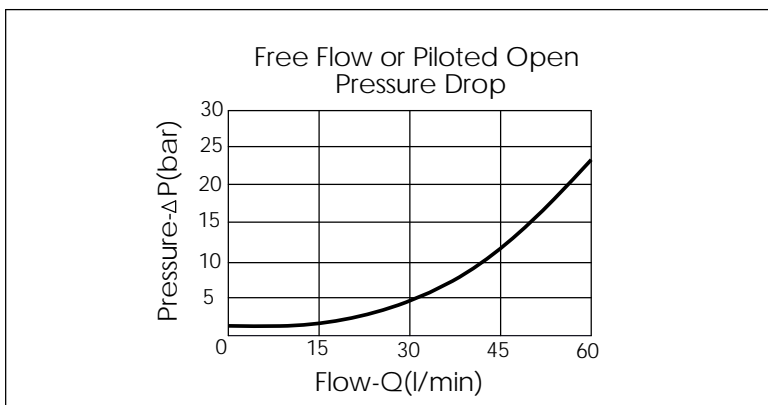
Rated flow: 60 l/min

Cartridge Valve:
 Refer to CB11A-X-Y-Z

* Refer to Winner Cartridge Valves Catalog.

Aluminum	0.35 kg(WITHOUT VALVES)
	0.55 kg(INCLUDE VALVES)
Ductile Iron	1.0 kg(WITHOUT VALVES)
	1.2 kg(INCLUDE VALVES)

* If you need the special specification.
 Please contact us.



X	PORT SIZE	
	PORTS V1,V2	PORTS C1,C2
G02	G 1/4"	G 1/4"
G03	G 3/8"	G 3/8"
G04	G 1/2"	G 1/2"
S06	SAE 6	SAE 6

Y	BODY MATERIAL
A	HIGH-STRENGTH ALUMINUM
S	DUCTILE IRON

Z	CARTRIDGE VALVES SELECTION
	WITHOUT VALVE
CB3H	CB11A33HL (3:1 , 280bar)
CB4J	CB11A34JL (4.5:1 , 350bar)
CB0J	CB11A30JL (10:1 , 350bar)

The selection is only example. Please refer to Winner Cartridge Program and to select the appropriate valves and manifolds assembly in accordance with request function (flow 、 pressure 、 ... etc.)