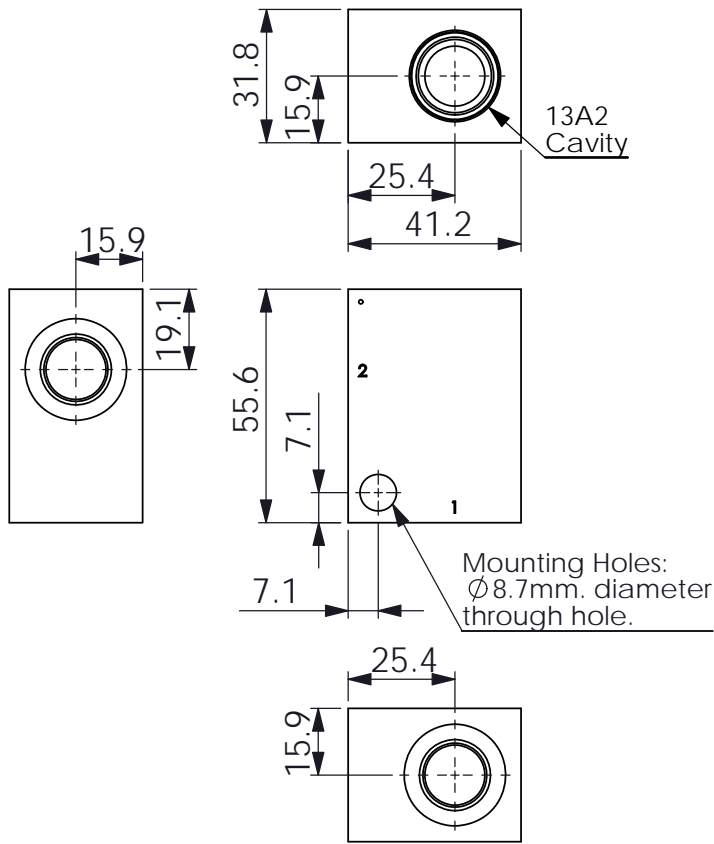
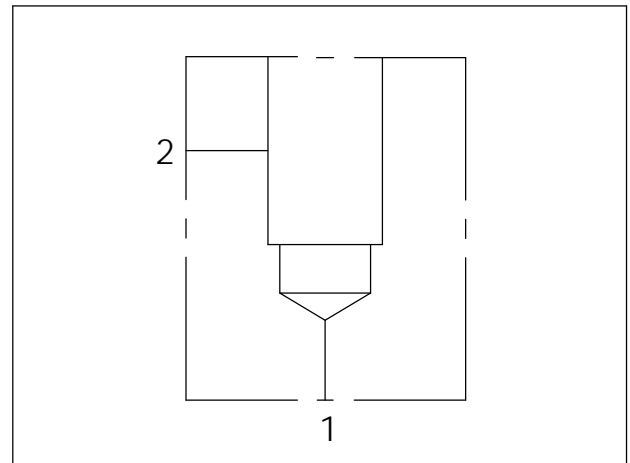
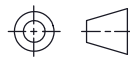


Ordering Code: **ML-13A2-X-Y 01-Z**



UNIT:mm



TECHNICAL DATA

Aluminum Body Pressure Rating: 210 bar
Ductile Iron
Body Pressure Rating: 350 bar

Cavity:

Refer to 13A2

* Refer to Winner Cartridge Valves Catalog.

Aluminum	0.17 kg(WITHOUT VALVES)
Ductile Iron	0.38 kg(WITHOUT VALVES)

* If you need the special specification.
Please contact us.

X	PORT SIZE		
	PORT 1	PORT 2	
G03	G 3/8"	G 3/8"	
P03	3/8"PT	3/8"PT	
A03	3/8"NPT	3/8"NPT	
S06	SAE 6	SAE 6	

Y	BODY MATERIAL	
A	HIGH-STRENGTH ALUMINUM	
S	DUCTILE IRON	

Z	CARTRIDGE VALVES SELECTION	
	WITHOUT VALVE	
CV03	CV13A2003N (80LPM,0.3bar)	
NV48	NV13A2048L (350bar)	
NCBA	NC13A21BAL (350bar)	
FR0A	FR13A20AL (0.4-23LPM,350bar)	
LS0G	LS13A20NG04 (10LPM)	

The selection is only example. Please refer to Winner Cartridge Program and to select the appropriate valves and manifolds assembly in accordance with request function (flow 、 pressure 、 ... etc.)