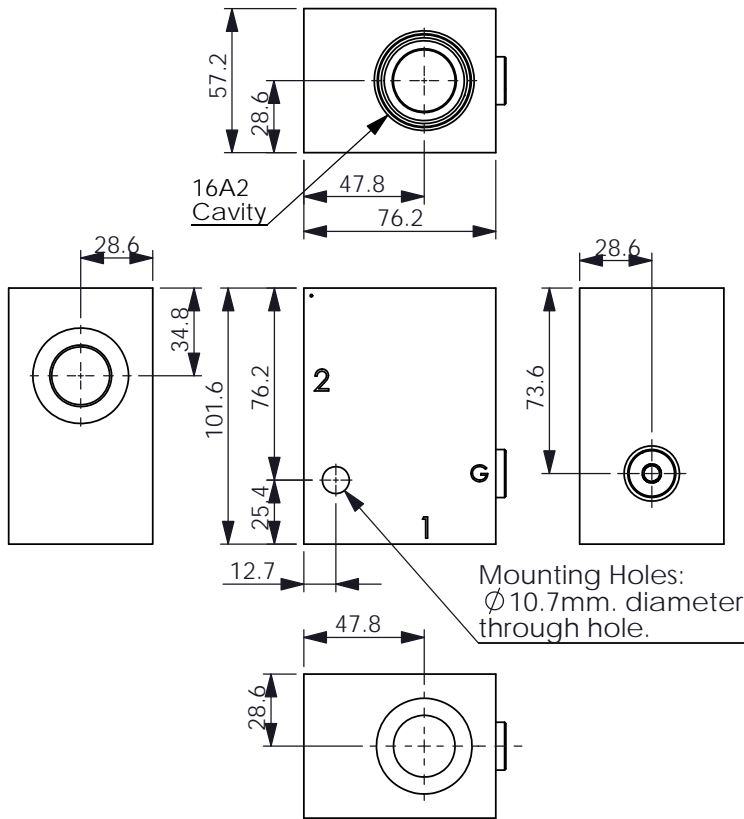
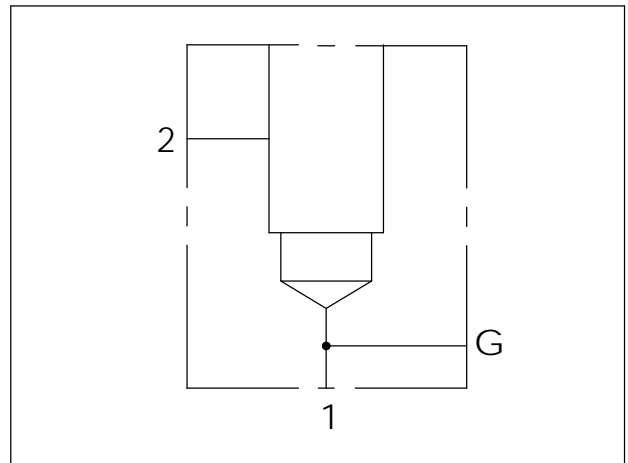
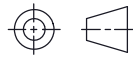


Ordering Code: **ML-16A2-X-Y 01-Z**



UNIT:mm



TECHNICAL DATA

Aluminum Body Pressure Rating: 210 bar
Ductile Iron
Body Pressure Rating: 350 bar

Cavity:
Refer to 16A2

* Refer to Winner Cartridge Valves Catalog.

Aluminum	0.97 kg(WITHOUT VALVES)
Ductile Iron	2.58 kg(WITHOUT VALVES)

* If you need the special specification.
Please contact us.

X	PORT SIZE		
	PORTS 1,2	PORT G	
G06G	G 3/4"	G 1/4"	
G08G	G 1"	G 1/4"	
G10G	G 1-1/4"	G 1/4"	
S12G	SAE 12	1/4"NPT	
S16G	SAE 16	1/4"NPT	

Y	BODY MATERIAL	
A	HIGH-STRENGTH ALUMINUM	
S	DUCTILE IRON	

Z	CARTRIDGE VALVES SELECTION	
	WITHOUT VALVE	
RP0A	RP16A20AL(380 LPM,7-210 bar)	
CV03	CV16A2003N (320LPM,0.3bar)	
FR0A	FR16A20AL (0.8-95LPM)	

The selection is only example. Please refer to Winner Cartridge Program and to select the appropriate valves and manifolds assembly in accordance with request function (flow 、 pressure 、 ... etc.)