

## ISO 05 SANDWICH MANIFOLD

Ordering Code: **MH05BDT-X-Y-Z01**

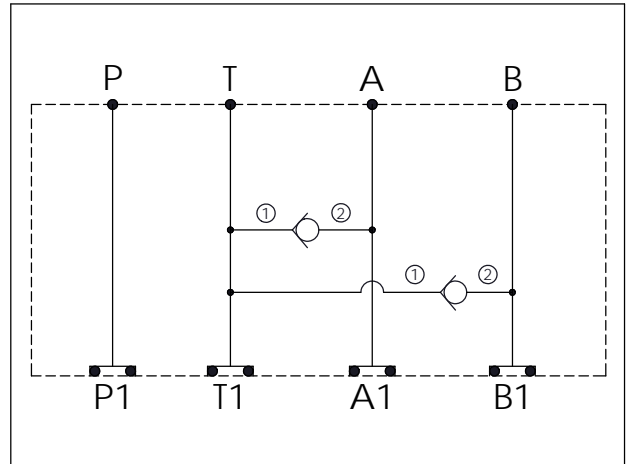
Stack Height : 49.5mm

Dimensions: 36.7, 76.2, 36.7, 149.6, 63.0, 49.5

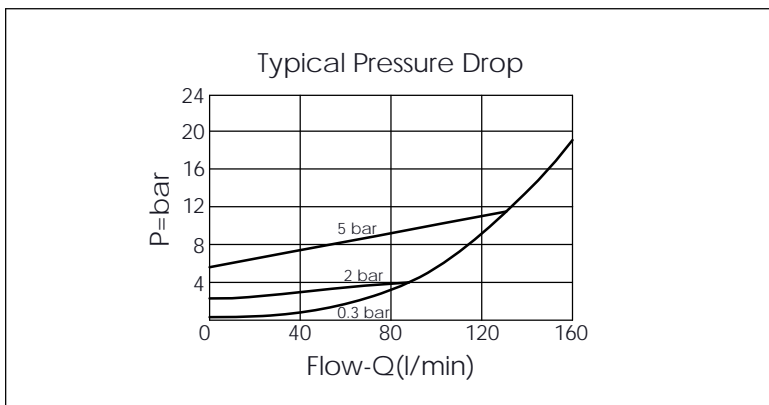
Ports: P, T, A, B, P1, T1, A1, B1

O-RING CODE NO. 4KAA014AA001

UNIT:mm



TECHNICAL DATA	
Aluminum Body Pressure Rating:	250 bar
Ductile Iron Body Pressure Rating:	350 bar
Rated flow:	80 l/min
Cartridge Valve:	Refer to CV5A-X-Y-Z
* Refer to Winner Cartridge Valves Catalog.	
Aluminum	0.76 kg(WITHOUT VALVES) 1.16 kg(INCLUDE VALVES)
Ductile Iron	2.21 kg(WITHOUT VALVES) 2.61 kg(INCLUDE VALVES)
* If you need the special specification. Please contact us.	



X	SELECTION FOR A PORT CONTROL
5A2	CAVITY ONLY(WITHOUT VALVE)
CV03	CV5A2003N (160 LPM , 0.3bar)

Y	SELECTION FOR B PORT CONTROL
5A2	CAVITY ONLY(WITHOUT VALVE)
CV03	CV5A2003N (160 LPM , 0.3bar)

Z	BODY MATERIAL
A	HIGH-STRENGTH ALUMINUM
S	DUCTILE IRON