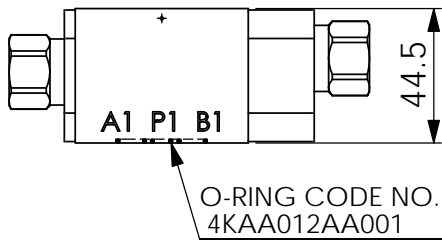
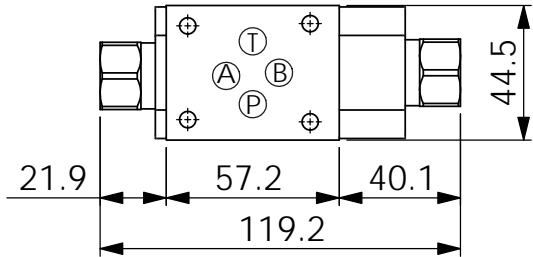
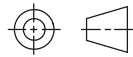


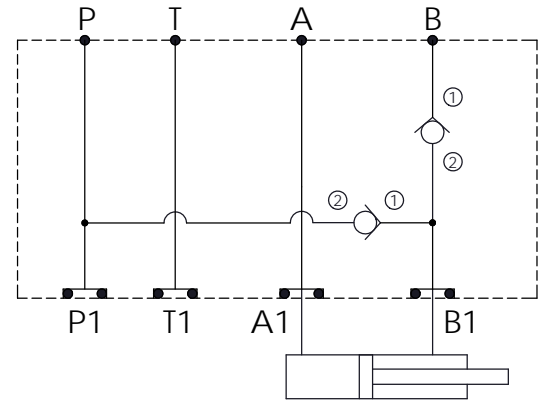
Ordering Code:	<b>MH03BRG-X-Y-Z 01</b>
Stack Height :	44.5mm



UNIT:mm



B to P (B to A) , Regenerative



### TECHNICAL DATA

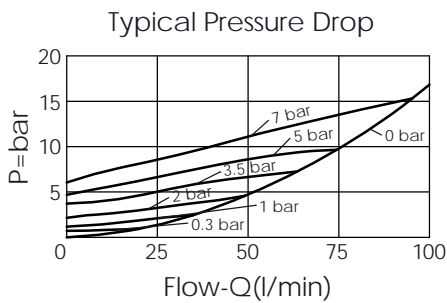
Aluminum Body Pressure Rating: 250 bar  
 Ductile Iron Body Pressure Rating: 350 bar

Rated flow: 40 l/min

Cartridge Valve:  
 Refer to CV13A-X-Y-Z  
 \* Refer to Winner Cartridge Valves Catalog.

Aluminum	0.35 kg(WITHOUT VALVES) 0.55 kg(INCLUDE VALVES)
----------	--

\* If you need the special specification. Please contact us.



### X SELECTION FOR CHECK VALVE (PORT ① TO ②, NEAR "A" PORT SIDE)

<b>13A2</b>	CAVITY ONLY(WITHOUT VALVE)
<b>CV20</b>	CV13A2020N (80LPM,2.0bar)

### Y SELECTION FOR B PORT CONTROL

<b>13A2</b>	CAVITY ONLY(WITHOUT VALVE)
<b>CV20</b>	CV13A2020N (80LPM,2.0bar)

### Z BODY MATERIAL

<b>A</b>	HIGH-STRENGTH ALUMINUM