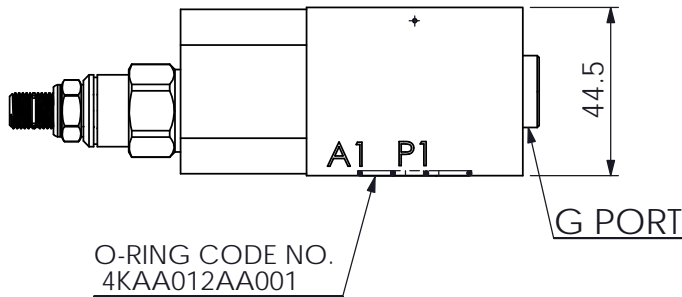
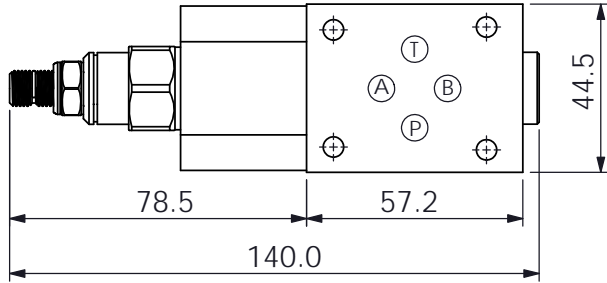
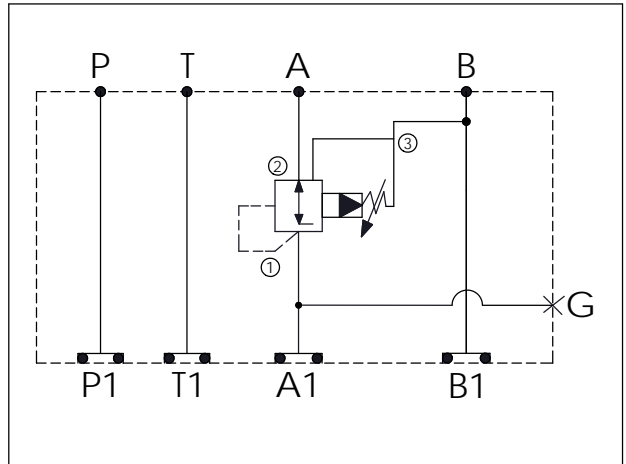
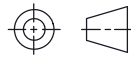


ISO 03 SANDWICH MANIFOLD

Ordering Code: **MH03CAW-X-Y-Z 01**
 Stack Height : 44.5mm



UNIT:mm



TECHNICAL DATA

Aluminum Body Pressure Rating: 250 bar
 Ductile Iron Body Pressure Rating: 350 bar

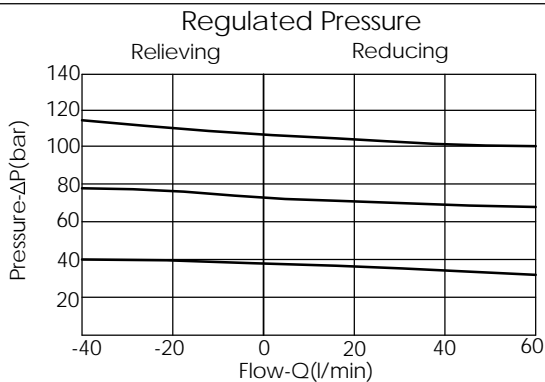
Rated flow: 40 l/min

Cartridge Valve:
 Refer to PP11A-X-Y-Z

* Refer to Winner Cartridge Valve Catalog.

| | | |
|--------------|-----|-------------------|
| Aluminum | 0.4 | kg(WITHOUT VALVE) |
| | 0.6 | kg(INCLUDE VALVE) |
| Ductile Iron | 1.1 | kg(WITHOUT VALVE) |
| | 1.3 | kg(INCLUDE VALVE) |

* If you need the special specification. Please contact us.



X SELECTION FOR A PORT CONTROL

| | |
|-------------|--|
| 11A3 | CAVITY ONLY(WITHOUT VALVE) |
| PP0A | PP11A30AL(40LPM,7.0~210bar) (Pilot Operated Reducing/Relieving) |

Y SELECTION FOR G PORT

| | |
|------------|----------------------|
| G02 | G 1/4"(Metric) |
| N02 | NPT 1/4"(U.S. Units) |
| | |
| | |
| | |
| | |

Z BODY MATERIAL

| | |
|----------|------------------------|
| A | HIGH-STRENGTH ALUMINUM |
| S | DUCTILE IRON |
| | |
| | |
| | |
| | |