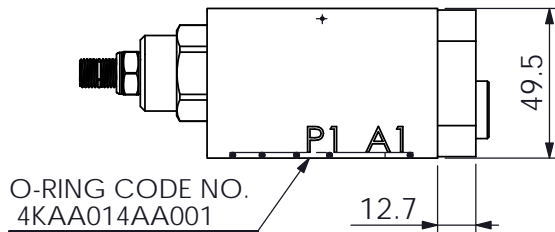
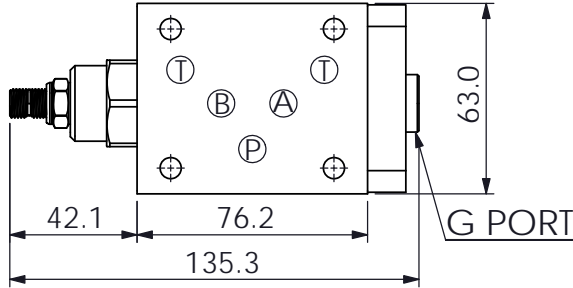
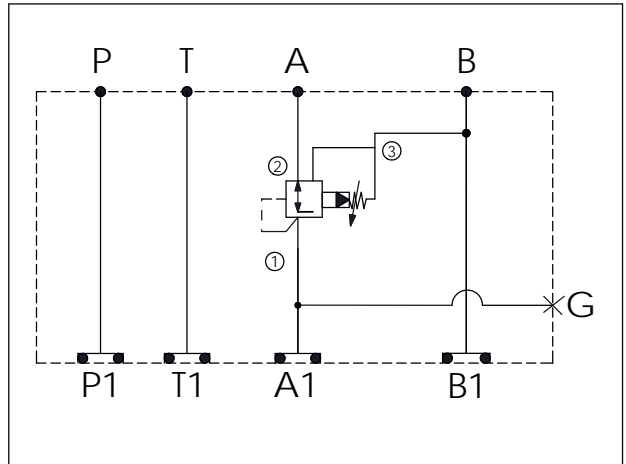


Ordering Code: **MH05CAW-X-Y-Z01**  
 Stack Height : 49.5mm



UNIT:mm



### TECHNICAL DATA

Aluminum Body Pressure Rating: 250 bar  
 Ductile Iron Body Pressure Rating: 350 bar

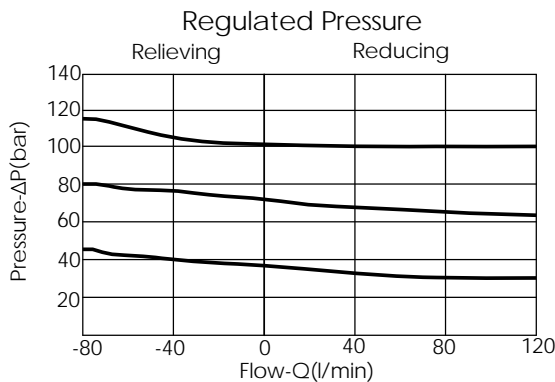
Rated flow: 80 l/min

Cartridge Valve:  
 Refer to PP2A-X-Y-Z

\* Refer to Winner Cartridge Valve Catalog.

Aluminum	0.65 kg(WITHOUT VALVE) 0.92 kg(INCLUDE VALVE)
Ductile Iron	1.65 kg(WITHOUT VALVE) 1.92 kg(INCLUDE VALVE)

\* If you need the special specification.  
 Please contact us.



### X SELECTION FOR A PORT CONTROL

<b>2A3</b>	CAVITY ONLY(WITHOUT VALVE)
<b>PP0A</b>	PP2A30AL(80LPM, 7.0~210bar) (Pilot Operated Reducing/Relieving)

### Y SELECTION FOR G PORT

<b>G02</b>	G 1/4"(Metric)
<b>N02</b>	NPT 1/4"(U.S. Units)

### Z BODY MATERIAL

<b>A</b>	HIGH-STRENGTH ALUMINUM
<b>S</b>	DUCTILE IRON