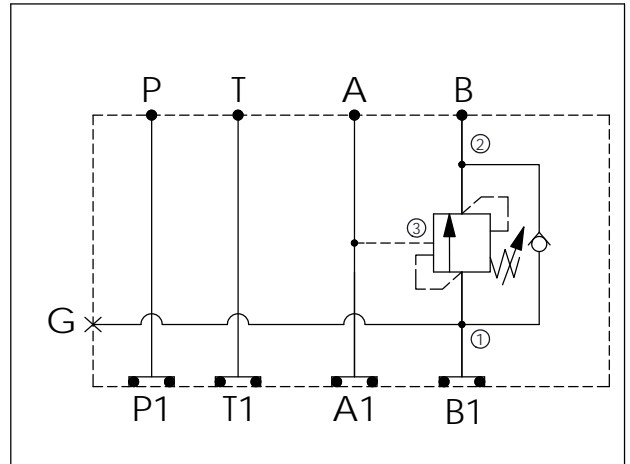


ISO 03 SANDWICH MANIFOLD

Ordering Code: **MH03CBW-X-Y-Z 01**

Stack Height : 44.5mm

UNIT:mm



TECHNICAL DATA

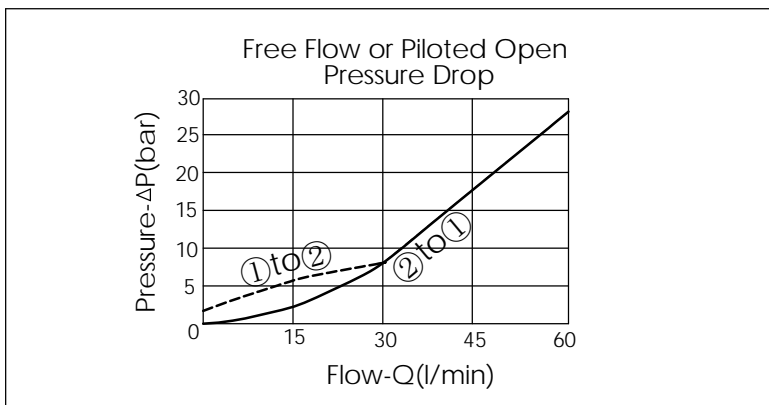
Aluminum Body Pressure Rating: 250 bar
 Ductile Iron Body Pressure Rating: 350 bar

Rated flow: 40 l/min

Cartridge Valve:
 Refer to CB11A-X-Y-Z
 * Refer to Winner Cartridge Valve Catalog.

| | |
|--------------|--|
| Aluminum | 0.4 kg(WITHOUT VALVE) 0.6 kg(INCLUDE VALVE) |
| Ductile Iron | 1.1 kg(WITHOUT VALVE) 1.3 kg(INCLUDE VALVE) |

* If you need the special specification. Please contact us.



| X | SELECTION FOR G PORT | |
|-----|----------------------|--|
| G02 | G 1/4"(Metric) | |
| N02 | NPT 1/4"(U.S. Units) | |
| | | |
| | | |

| Y | SELECTION FOR B PORT CONTROL | |
|------|------------------------------|--|
| 11A3 | CAVITY ONLY(WITHOUT VALVE) | |
| CB3H | CB11A33HL (3:1 , 280bar) | |
| CB4J | CB11A34JL (4.5:1 , 350bar) | |
| CB0J | CB11A30JL (10:1 , 350bar) | |
| | | |
| | | |

| Z | BODY MATERIAL | |
|---|------------------------|--|
| A | HIGH-STRENGTH ALUMINUM | |
| S | DUCTILE IRON | |
| | | |
| | | |