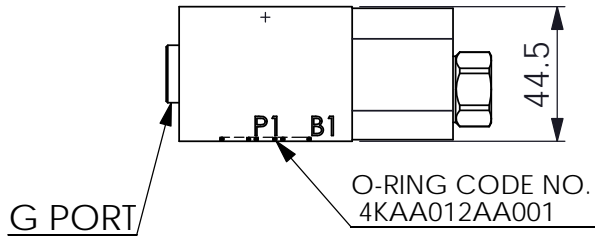
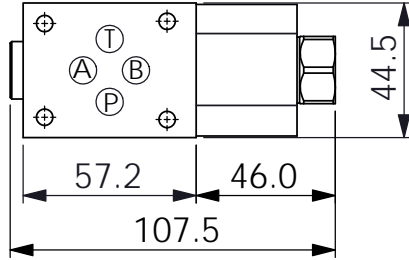
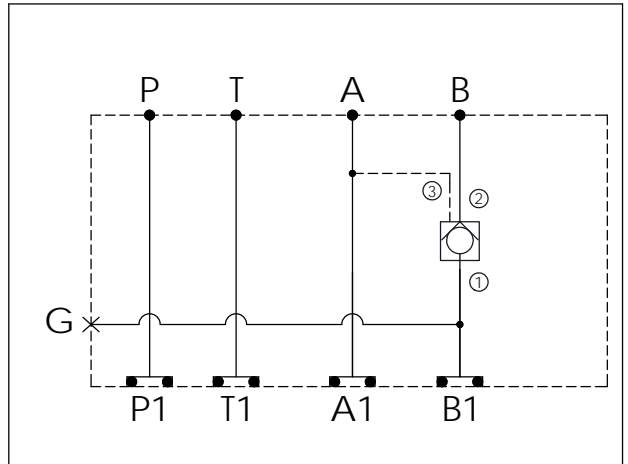
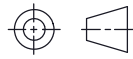


Ordering Code: MH03CBW-X-Y-Z 01
Stack Height : 44.5mm



UNIT:mm



TECHNICAL DATA

Aluminum Body Pressure Rating: 250 bar

Ductile Iron Body Pressure Rating: 350 bar

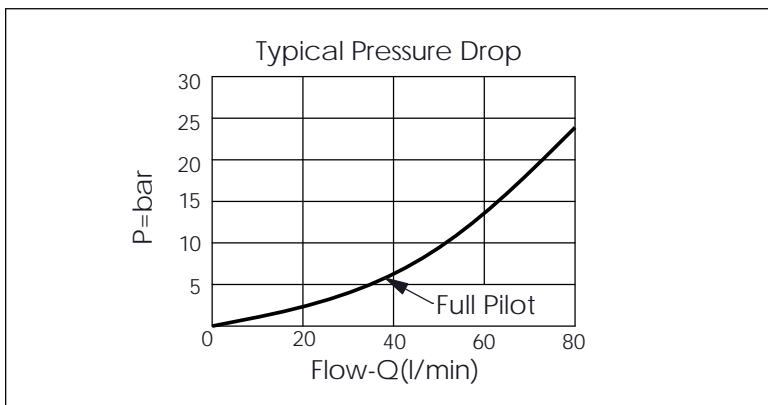
Rated flow: 40 l/min

Cartridge Valve:
Refer to CO11A-X-Y-Z

* Refer to Winner Cartridge Valve Catalog.

Aluminum	0.4 kg(WITHOUT VALVE) 0.5 kg(INCLUDE VALVE)
Ductile Iron	1.1 kg(WITHOUT VALVE) 1.2 kg(INCLUDE VALVE)

* If you need the special specification. Please contact us.



X	SELECTION FOR G PORT	
G02	G 1/4"(Metric)	
N02	NPT 1/4"(U.S. Units)	

Y	SELECTION FOR B PORT CONTROL	
11A3	CAVITY ONLY(WITHOUT VALVE)	
CO20	CO11A3020N (60LPM,2.0bar)	
CO03	CO11A3003N (60LPM,0.3bar)	
CO50	CO11A3050N (60LPM,5.0bar)	

Z	BODY MATERIAL	
A	HIGH-STRENGTH ALUMINUM	
S	DUCTILE IRON	