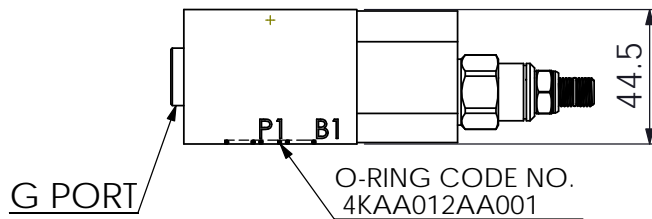
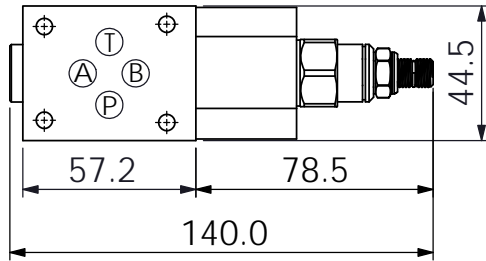
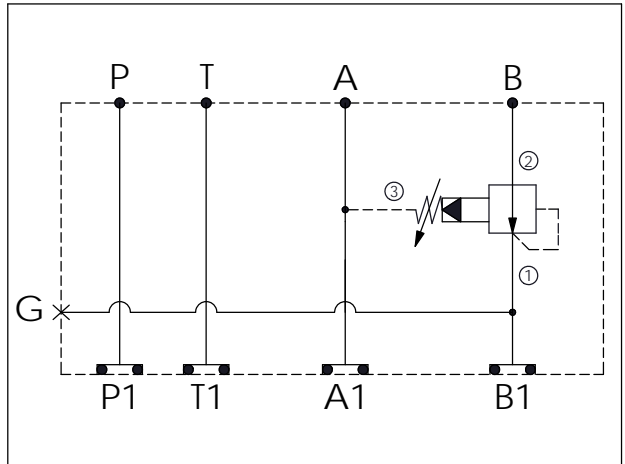
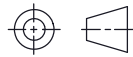


ISO 03 SANDWICH MANIFOLD

Ordering Code: **MH03CBW-X-Y-Z 01**
 Stack Height : 44.5mm



UNIT:mm



TECHNICAL DATA

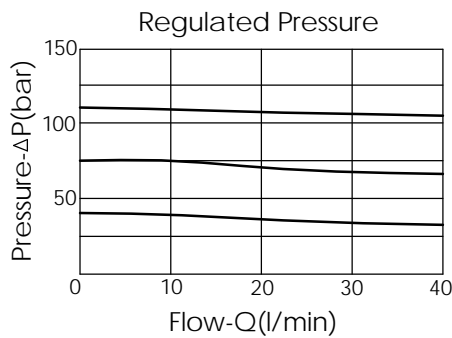
Aluminum Body Pressure Rating: 250 bar
 Ductile Iron Body Pressure Rating: 350 bar

Rated flow: 40 l/min

Cartridge Valve:
 Refer to PB11A-X-Y-Z
 * Refer to Winner Cartridge Valve Catalog.

Aluminum	0.4	kg(WITHOUT VALVE)
	0.6	kg(INCLUDE VALVE)
Ductile Iron	1.1	kg(WITHOUT VALVE)
	1.3	kg(INCLUDE VALVE)

* If you need the special specification. Please contact us.



X SELECTION FOR G PORT

G02	G 1/4"(Metric)	
N02	NPT 1/4"(U.S. Units)	

Y SELECTION FOR B PORT CONTROL

11A3	CAVITY ONLY(WITHOUT VALVE)	
PB0A	PB11A30AL (40LPM , 7-210bar)	

Z BODY MATERIAL

A	HIGH-STRENGTH ALUMINUM	
S	DUCTILE IRON	