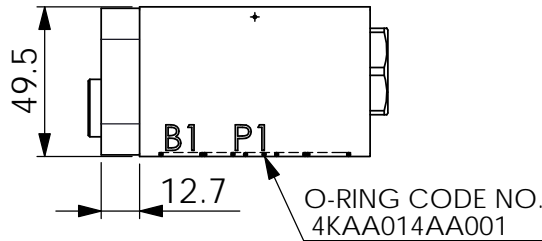
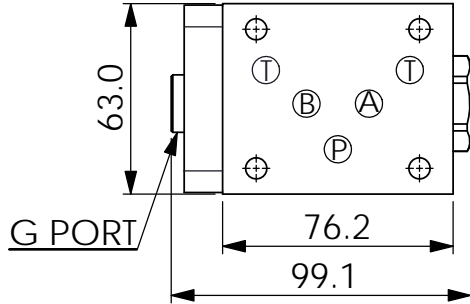
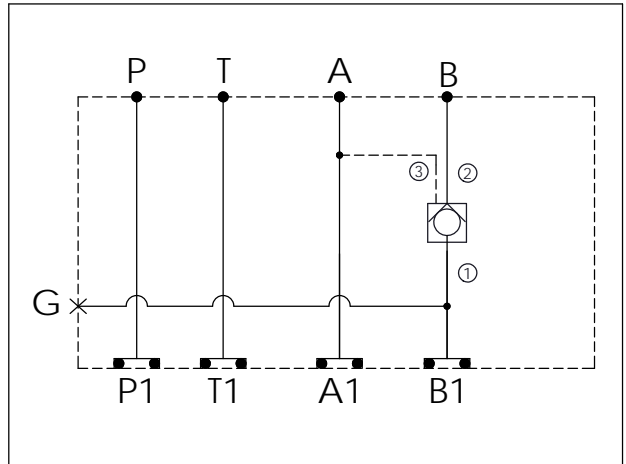
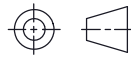


Ordering Code: MH05CBW-X-Y-Z01
Stack Height : 49.5mm



UNIT:mm



TECHNICAL DATA

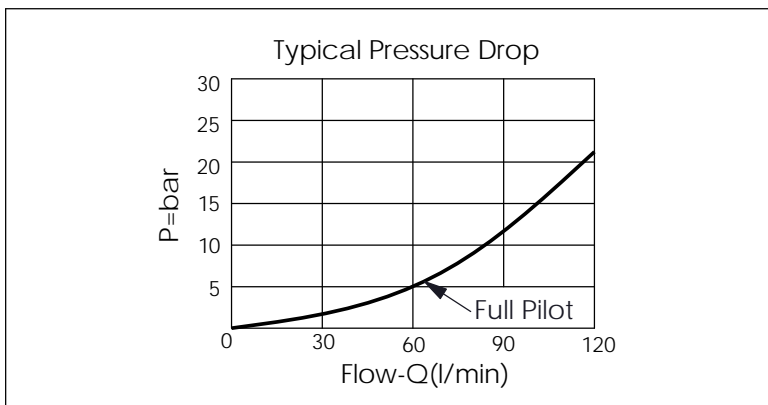
Aluminum Body Pressure Rating: 250 bar
 Ductile Iron Body Pressure Rating: 350 bar

Rated flow: 80 l/min

Cartridge Valve:
 Refer to CO2A-X-Y-Z
 * Refer to Winner Cartridge Valve Catalog.

Aluminum	0.65 kg(WITHOUT VALVE) 0.9 kg(INCLUDE VALVE)
Ductile Iron	1.65 kg(WITHOUT VALVE) 1.9 kg(INCLUDE VALVE)

* If you need the special specification. Please contact us.



X	SELECTION FOR G PORT	
G02	G 1/4"(Metric)	
N02	NPT 1/4"(U.S. Units)	

Y	SELECTION FOR B PORT CONTROL	
2A3	CAVITY ONLY(WITHOUT VALVE)	
CO20	CO2A3020N (120LPM,2.0bar)	
CO03	CO2A3003N (120LPM,0.3bar)	
CO50	CO2A3050N (120LPM,5.0bar)	

Z	BODY MATERIAL	
A	HIGH-STRENGTH ALUMINUM	
S	DUCTILE IRON	