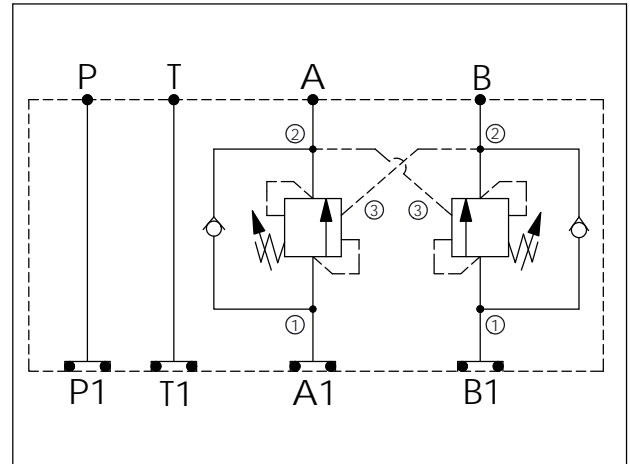


Ordering Code: **MH05CDH-X-Y-Z 03**

Stack Height : 63.0mm

UNIT:mm



### TECHNICAL DATA

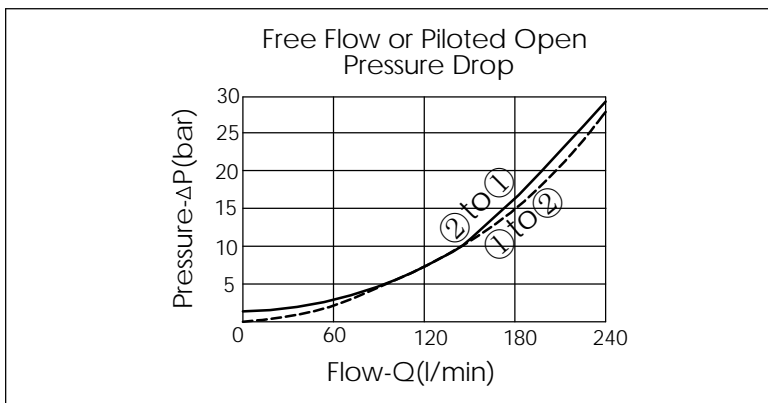
Aluminum Body Pressure Rating: 250 bar  
 Ductile Iron Body Pressure Rating: 350 bar

Rated flow: 80 l/min

Cartridge Valve:  
 Refer to CB17A-X-Y-Z  
 \* Refer to Winner Cartridge Valve Catalog.

|          |  |
|----------|--|
| Aluminum | 1.35 kg(WITHOUT VALVES)<br>2.55 kg(INCLUDE VALVES) |
|----------|--|

\* If you need the special specification. Please contact us.



| X           | SELECTION FOR A PORT CONTROL |
|-------------|------------------------------|
| <b>17A3</b> | CAVITY ONLY(WITHOUT VALVE)   |
| <b>CBCH</b> | CB17A3CHL (3:1 , 280bar)     |
| <b>CBAH</b> | CB17A3AHL (1.5:1 , 280bar)   |
| <b>CBDK</b> | CB17A3DKL (4.5:1 , 175bar)   |
| <b>CBJK</b> | CB17A3JKL (10:1 , 175bar)    |

| Y           | SELECTION FOR B PORT CONTROL |
|-------------|------------------------------|
| <b>17A3</b> | CAVITY ONLY(WITHOUT VALVE)   |
| <b>CBCH</b> | CB17A3CHL (3:1 , 280bar)     |
| <b>CBAH</b> | CB17A3AHL (1.5:1 , 280bar)   |
| <b>CBDK</b> | CB17A3DKL (4.5:1 , 175bar)   |
| <b>CBJK</b> | CB17A3JKL (10:1 , 175bar)    |

| Z        | BODY MATERIAL          |
|----------|------------------------|
| <b>A</b> | HIGH-STRENGTH ALUMINUM |