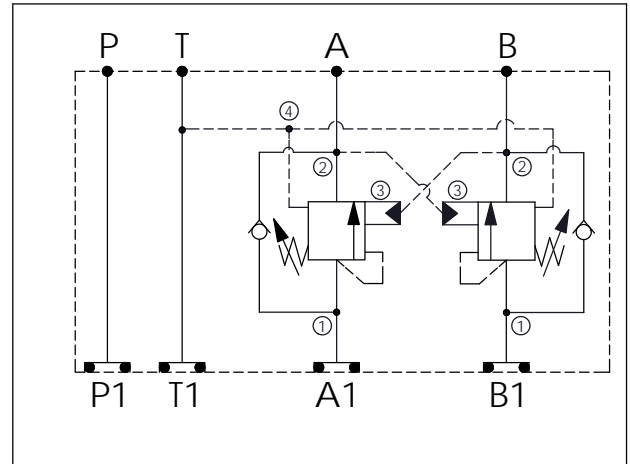


Ordering Code:	<b>MH03CDT-X-Y-Z01</b>
Stack Height :	44.5mm

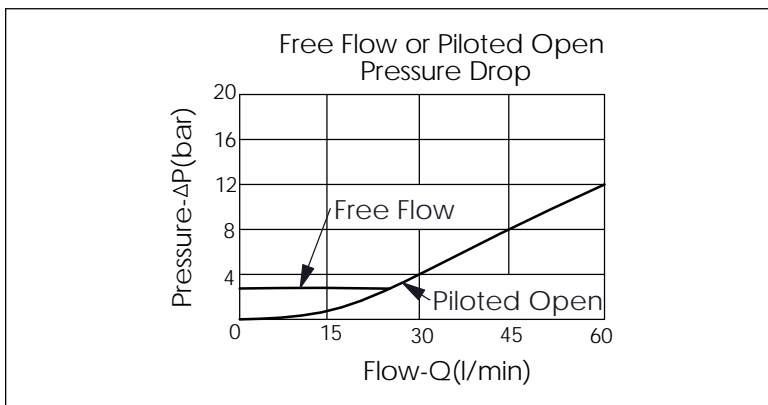
  
  

O-RING CODE NO.  
4KAA012AA001

UNIT:mm



TECHNICAL DATA	
Aluminum Body Pressure Rating:	250 bar
Ductile Iron Body Pressure Rating:	350 bar
Rated flow:	40 l/min
Cartridge Valve: Refer to CW21A-X-Y-Z * Refer to Winner Cartridge Valve Catalog.	
Aluminum	0.6 kg(WITHOUT VALVES) 1.0 kg(INCLUDE VALVES)
Ductile Iron	1.7 kg(WITHOUT VALVES) 2.1 kg(INCLUDE VALVES)
* If you need the special specification. Please contact us.	



X	SELECTION FOR A PORT CONTROL
<b>21A4</b>	CAVITY ONLY(WITHOUT VALVE)
<b>CWAI</b>	CW21A4AIL (1:1 , 105bar)
<b>CWBF</b>	CW21A4BFL (2:1 , 175bar)
<b>CWCH</b>	CW21A4CHL (3:1 , 280bar)
<b>CWEF</b>	CW21A4EFL (5:1 , 175bar)

Y	SELECTION FOR B PORT CONTROL
<b>21A4</b>	CAVITY ONLY(WITHOUT VALVE)
<b>CWAI</b>	CW21A4AIL (1:1 , 105bar)
<b>CWBF</b>	CW21A4BFL (2:1 , 175bar)
<b>CWCH</b>	CW21A4CHL (3:1 , 280bar)
<b>CWEF</b>	CW21A4EFL (5:1 , 175bar)

Z	BODY MATERIAL
<b>A</b>	HIGH-STRENGTH ALUMINUM
<b>S</b>	DUCTILE IRON