

Ordering Code: **MH05CDT-X-Y-Z03**

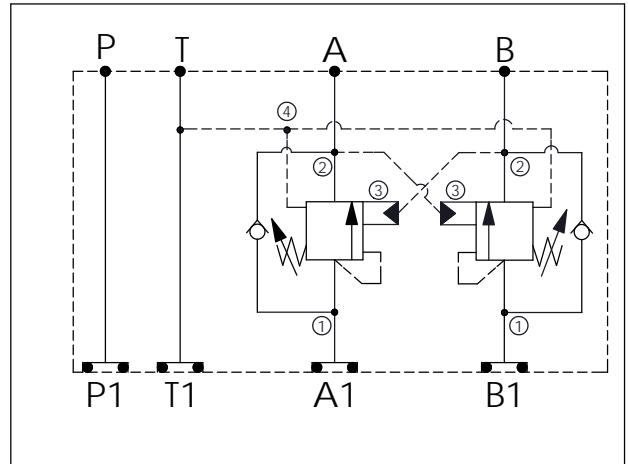
Stack Height : 63.0mm

Dimensions: 94.6, 76.2, 94.6, 265.4, 63.0

Ports: P, T, A, B, P1, T1, A1, B1

O-RING CODE NO. 4KAA014AA001

UNIT:mm



### TECHNICAL DATA

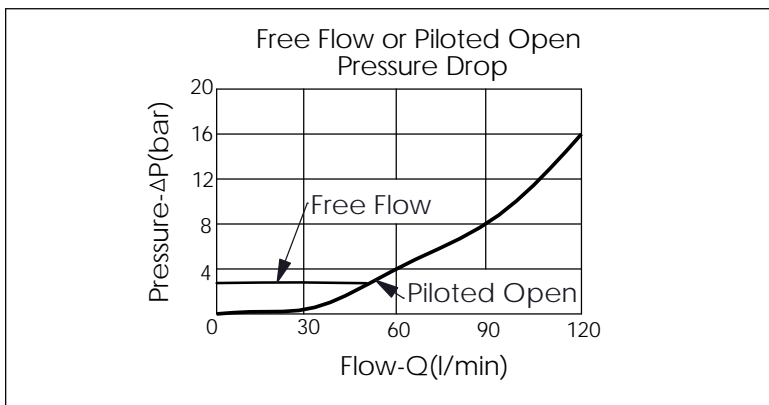
Aluminum Body Pressure Rating: 250 bar  
 Ductile Iron Body Pressure Rating: 350 bar

Rated flow: 80 l/min

Cartridge Valve:  
 Refer to CW22A-X-Y-Z  
 \* Refer to Winner Cartridge Valve Catalog.

Aluminum	1.45 kg(WITHOUT VALVES) 2.2 kg(INCLUDE VALVES)
Ductile Iron	4.15 kg(WITHOUT VALVES) 4.9 kg(INCLUDE VALVES)

\* If you need the special specification. Please contact us.



X	SELECTION FOR A PORT CONTROL
<b>22A4</b>	CAVITY ONLY(WITHOUT VALVE)
<b>CWAI</b>	CW22A4A1L (1:1 , 105bar)
<b>CWBF</b>	CW22A4BFL (2:1 , 175bar)
<b>CWCH</b>	CW22A4CHL (3:1 , 280bar)
<b>CWEF</b>	CW22A4EFL (5:1 , 175bar)

Y	SELECTION FOR B PORT CONTROL
<b>22A4</b>	CAVITY ONLY(WITHOUT VALVE)
<b>CWAI</b>	CW22A4A1L (1:1 , 105bar)
<b>CWBF</b>	CW22A4BFL (2:1 , 175bar)
<b>CWCH</b>	CW22A4CHL (3:1 , 280bar)
<b>CWEF</b>	CW22A4EFL (5:1 , 175bar)

Z	BODY MATERIAL
<b>A</b>	HIGH-STRENGTH ALUMINUM
<b>S</b>	DUCTILE IRON