

Ordering Code: **MH03CDW-X-Y-Z 01**

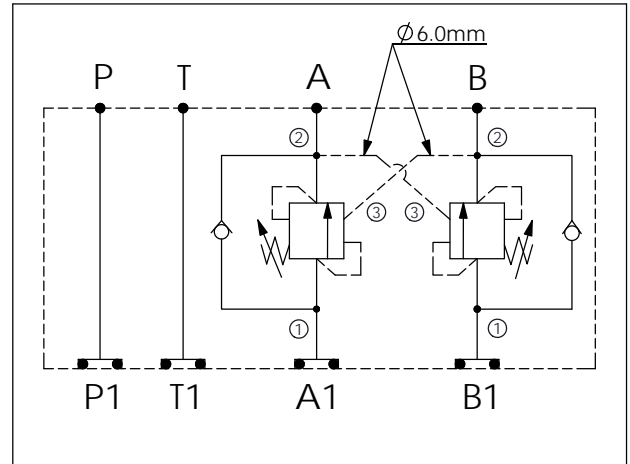
Stack Height : 44.5mm

Dimensions: 65.1, 57.2, 65.1, 187.4, 44.5

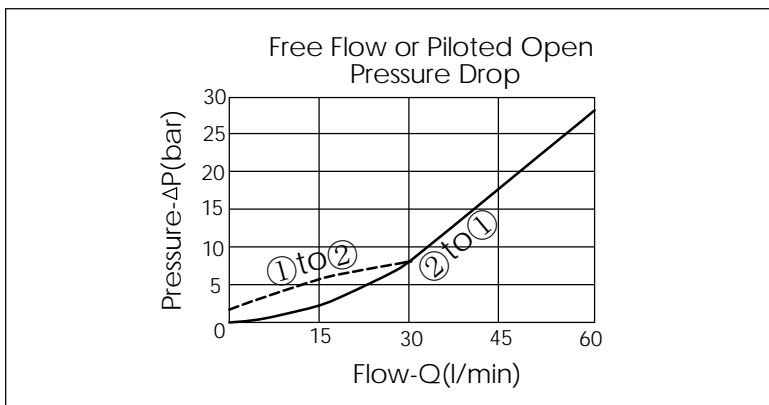
Ports: A, B, P, T, A1, B1, P1

O-RING CODE NO. 4KAA012AA001

UNIT:mm



TECHNICAL DATA	
Aluminum Body Pressure Rating:	250 bar
Ductile Iron Body Pressure Rating:	350 bar
Rated flow:	40 l/min
Cartridge Valve:	Refer to CB11A-X-Y-Z
	* Refer to Winner Cartridge Valves Catalog.
Aluminum	0.5 kg(WITHOUT VALVES) 0.9 kg(INCLUDE VALVES)
Ductile Iron	1.3 kg(WITHOUT VALVES) 1.7 kg(INCLUDE VALVES)
* If you need the special specification. Please contact us.	



X	SELECTION FOR A PORT CONTROL
<b>11A3</b>	CAVITY ONLY(WITHOUT VALVE)
<b>CB3H</b>	CB11A33HL (3:1 , 280bar)
<b>CB4J</b>	CB11A34JL (4.5:1 , 350bar)
<b>CB0J</b>	CB11A30JL (10:1 , 350bar)

Y	SELECTION FOR B PORT CONTROL
<b>11A3</b>	CAVITY ONLY(WITHOUT VALVE)
<b>CB3H</b>	CB11A33HL (3:1 , 280bar)
<b>CB4J</b>	CB11A34JL (4.5:1 , 350bar)
<b>CB0J</b>	CB11A30JL (10:1 , 350bar)

Z	BODY MATERIAL
<b>A</b>	HIGH-STRENGTH ALUMINUM
<b>S</b>	DUCTILE IRON