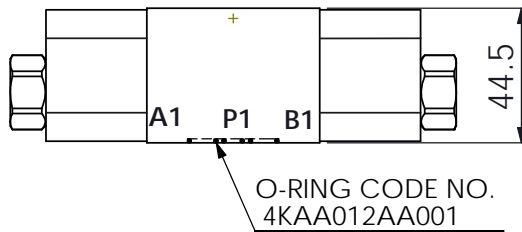
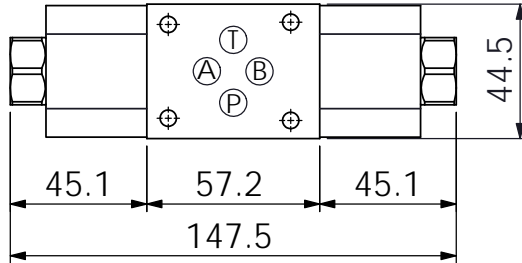
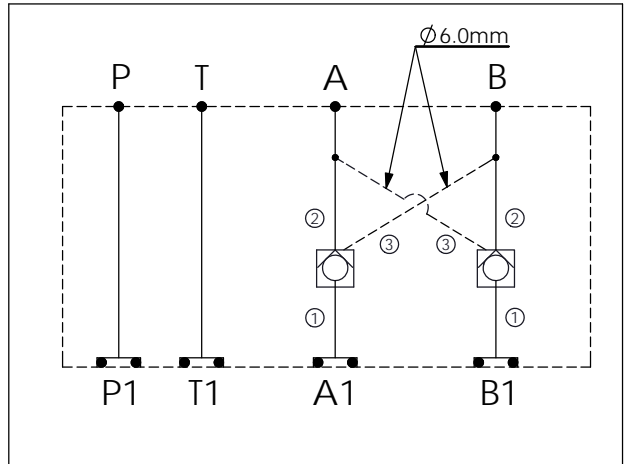
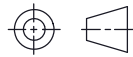


Ordering Code: **MH03CDW-X-Y-Z 01**
 Stack Height : 44.5mm



UNIT:mm



TECHNICAL DATA

Aluminum Body Pressure Rating: 250 bar

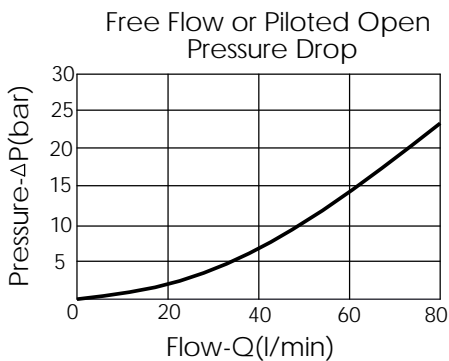
Ductile Iron Body Pressure Rating: 350 bar

Rated flow: 40 l/min

Cartridge Valve:
 Refer to CO11A-X-Y-Z
 * Refer to Winner Cartridge Valves Catalog.

Aluminum	0.5 kg(WITHOUT VALVES) 0.8 kg(INCLUDE VALVES)
Ductile Iron	1.3 kg(WITHOUT VALVES) 1.6 kg(INCLUDE VALVES)

* If you need the special specification. Please contact us.



X SELECTION FOR A PORT CONTROL

11A3	CAVITY ONLY (WITHOUT VALVE)	
CO20	CO11A3020N (60LPM,2.0bar)	
CO03	CO11A3003N (60LPM,0.3bar)	
CO50	CO11A3050N (60LPM,5.0bar)	

Y SELECTION FOR B PORT CONTROL

11A3	CAVITY ONLY (WITHOUT VALVE)	
CO20	CO11A3020N (60LPM,2.0bar)	
CO03	CO11A3003N (60LPM,0.3bar)	
CO50	CO11A3050N (60LPM,5.0bar)	

Z BODY MATERIAL

A	HIGH-STRENGTH ALUMINUM	
S	DUCTILE IRON	