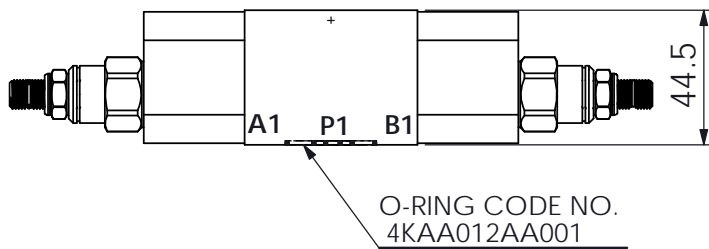
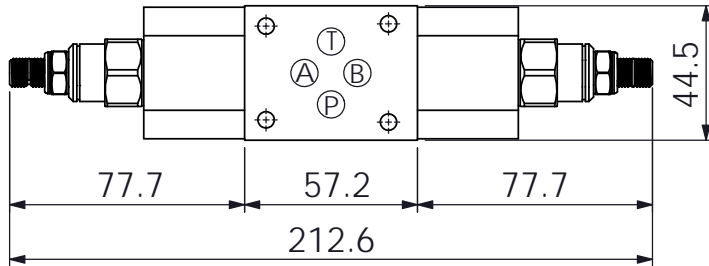
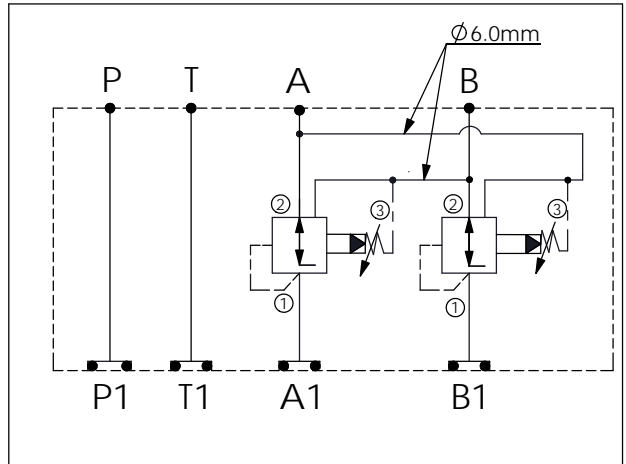
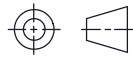


ISO 03 SANDWICH MANIFOLD

Ordering Code: MH03CDW-X-Y-Z 01
Stack Height : 44.5mm



UNIT:mm



TECHNICAL DATA

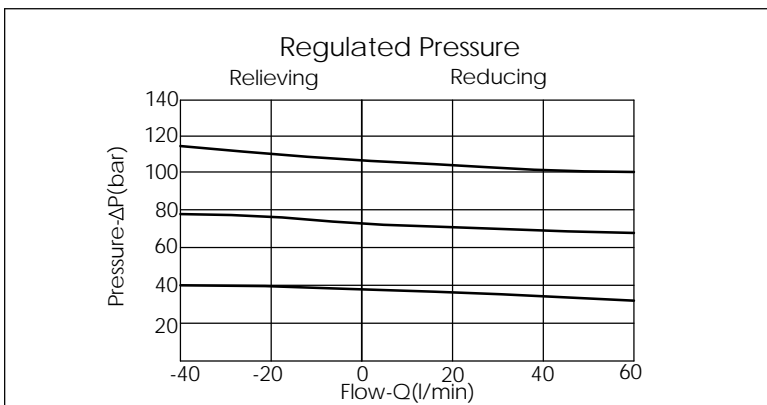
Aluminum Body Pressure Rating: 250 bar
 Ductile Iron Body Pressure Rating: 350 bar

Rated flow: 40 l/min

Cartridge Valve:
 Refer to PP11A-X-Y-Z
 * Refer to Winner Cartridge Valves Catalog.

Aluminum	0.5 kg(WITHOUT VALVES) 0.85 kg(INCLUDE VALVES)
Ductile Iron	1.3 kg(WITHOUT VALVES) 1.65 kg(INCLUDE VALVES)

* If you need the special specification. Please contact us.



X	SELECTION FOR A PORT CONTROL	
11A3	CAVITY ONLY(WITHOUT VALVE)	
PP0A	PP11A30AL(40LPM,7.0~210bar) (Pilot Operated Reducing/Relieving)	

Y	SELECTION FOR B PORT CONTROL	
11A3	CAVITY ONLY(WITHOUT VALVE)	
PP0A	PP11A30AL(40LPM,7.0~210bar) (Pilot Operated Reducing/Relieving)	

Z	BODY MATERIAL	
A	HIGH-STRENGTH ALUMINUM	
S	DUCTILE IRON	