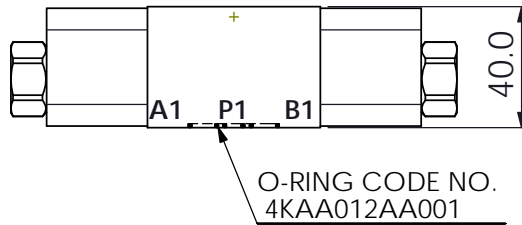
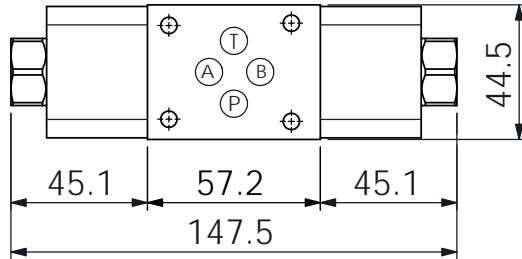
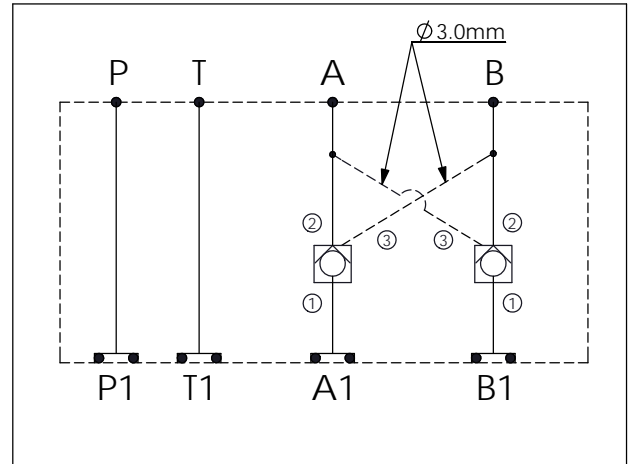
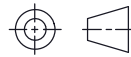


Ordering Code: <b>MH03CDW-X-Y-Z 02</b>
Stack Height : 40.0mm



UNIT:mm



### TECHNICAL DATA

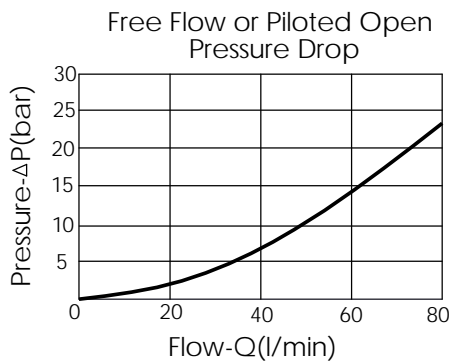
Aluminum Body Pressure Rating: 250 bar  
 Ductile Iron Body Pressure Rating: 350 bar

Rated flow: 40 l/min

Cartridge Valve:  
 Refer to CO11A-X-Y-Z  
 \* Refer to Winner Cartridge Valves Catalog.

Aluminum	0.45 kg(WITHOUT VALVES)
	0.75 kg(INCLUDE VALVES)
Ductile Iron	1.3 kg(WITHOUT VALVES)
	1.6 kg(INCLUDE VALVES)

\* If you need the special specification. Please contact us.



### X SELECTION FOR A PORT CONTROL

<b>11A3</b>	CAVITY ONLY(WITHOUT VALVE)	
<b>CO20</b>	CO11A3020N ( 60LPM,2.0bar)	
<b>CO03</b>	CO11A3003N (60LPM,0.3bar)	
<b>CO50</b>	CO11A3050N (60LPM,5.0bar)	

### Y SELECTION FOR B PORT CONTROL

<b>11A3</b>	CAVITY ONLY(WITHOUT VALVE)	
<b>CO20</b>	CO11A3020N ( 60LPM,2.0bar)	
<b>CO03</b>	CO11A3003N (60LPM,0.3bar)	
<b>CO50</b>	CO11A3050N (60LPM,5.0bar)	

### Z BODY MATERIAL

<b>A</b>	HIGH-STRENGTH ALUMINUM	
<b>S</b>	DUCTILE IRON	