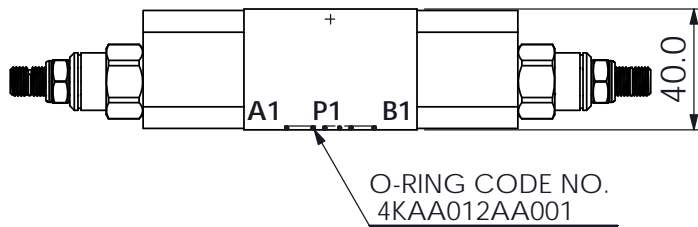
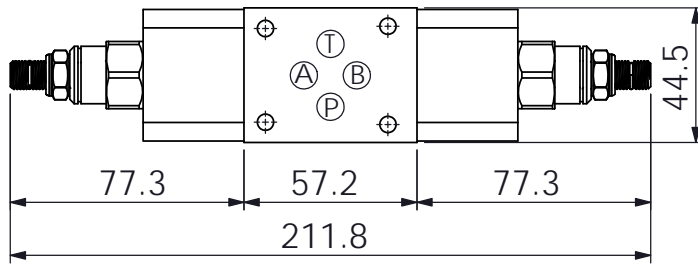
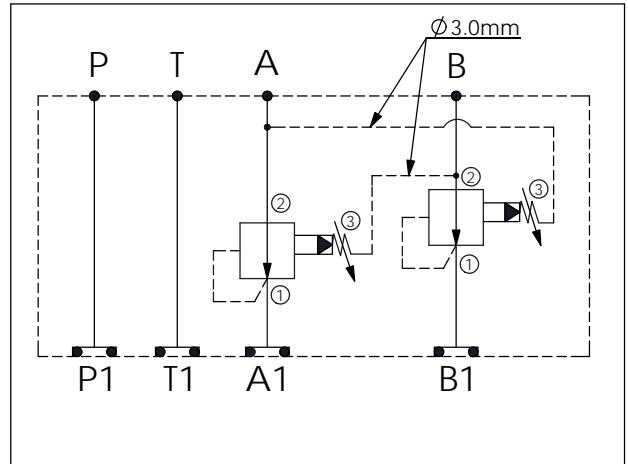
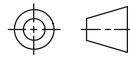


Ordering Code: <b>MH03CDW-X-Y-Z 02</b>
Stack Height : 40.0mm



UNIT:mm



### TECHNICAL DATA

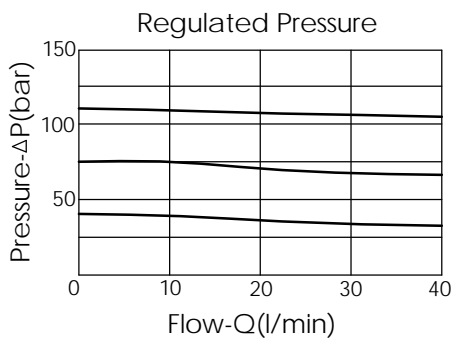
Aluminum Body Pressure Rating: 250 bar  
 Ductile Iron Body Pressure Rating: 350 bar

Rated flow: 40 l/min

Cartridge Valve:  
 Refer to PB11A-X-Y-Z  
 \* Refer to Winner Cartridge Valves Catalog.

Aluminum	0.45 kg(WITHOUT VALVES) 0.8 kg(INCLUDE VALVES)
Ductile Iron	1.3 kg(WITHOUT VALVES) 1.65 kg(INCLUDE VALVES)

\* If you need the special specification. Please contact us.



### X SELECTION FOR A PORT CONTROL

<b>11A3</b>	CAVITY ONLY(WITHOUT VALVE)
<b>PB0A</b>	PB11A30AL (40LPM ,7-210bar)

### Y SELECTION FOR B PORT CONTROL

<b>11A3</b>	CAVITY ONLY(WITHOUT VALVE)
<b>PB0A</b>	PB11A30AL (40LPM ,7-210bar)

### Z BODY MATERIAL

<b>A</b>	HIGH-STRENGTH ALUMINUM
<b>S</b>	DUCTILE IRON