

Ordering Code: **MH05CDW-X-Y-Z 01**

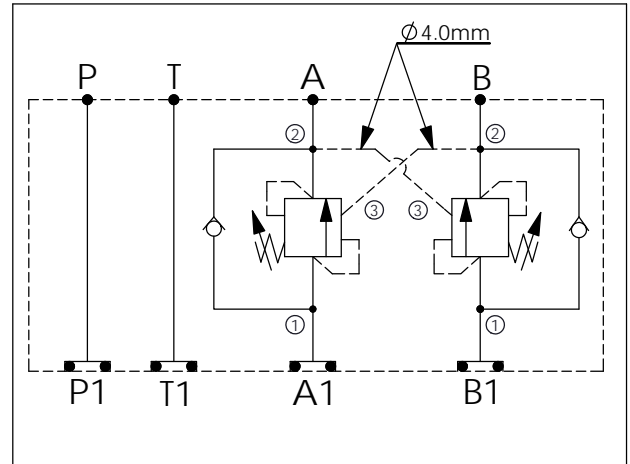
Stack Height : 49.5mm

Dimensions: 67.1, 76.2, 67.1, 210.3, 63.0, 49.5

Ports: P, T, A, B, P1, T1, A1, B1

O-RING CODE NO. 4KAA014AA001

UNIT:mm



TECHNICAL DATA

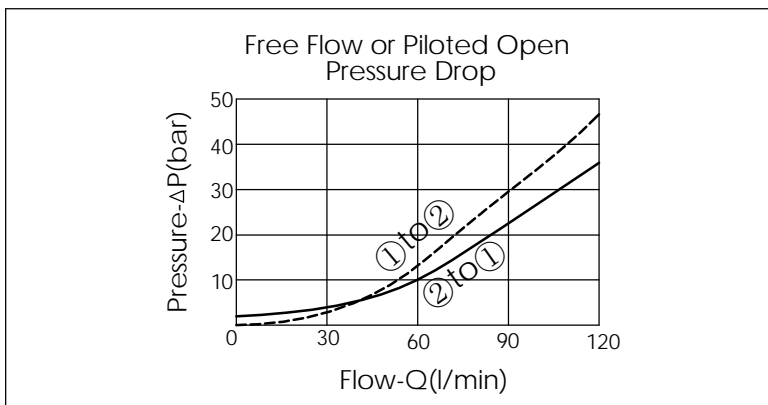
Aluminum Body Pressure Rating: 250 bar
 Ductile Iron Body Pressure Rating: 350 bar

Rated flow: 80 l/min

Cartridge Valve:
 Refer to CB2A-X-Y-Z
 * Refer to Winner Cartridge Valve Catalog.

Aluminum	0.85 kg(WITHOUT VALVES) 1.65 kg(INCLUDE VALVES)
Ductile Iron	2.4 kg(WITHOUT VALVES) 3.2 kg(INCLUDE VALVES)

* If you need the special specification. Please contact us.



X	SELECTION FOR A PORT CONTROL
2A3	CAVITY ONLY(WITHOUT VALVE)
CB3H	CB2A33HL (3:1 , 280bar)
CB4J	CB2A34JL (4.5:1 , 350bar)
CB0J	CB2A30JL (10:1 , 350bar)

Y	SELECTION FOR B PORT CONTROL
2A3	CAVITY ONLY(WITHOUT VALVE)
CB3H	CB2A33HL (3:1 , 280bar)
CB4J	CB2A34JL (4.5:1 , 350bar)
CB0J	CB2A30JL (10:1 , 350bar)

Z	BODY MATERIAL
A	HIGH-STRENGTH ALUMINUM
S	DUCTILE IRON