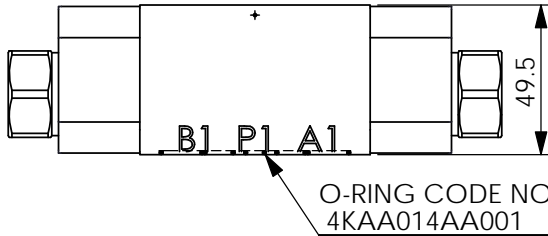
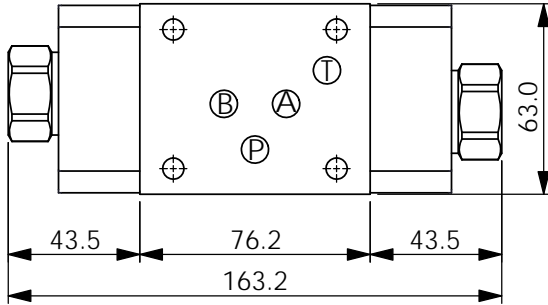
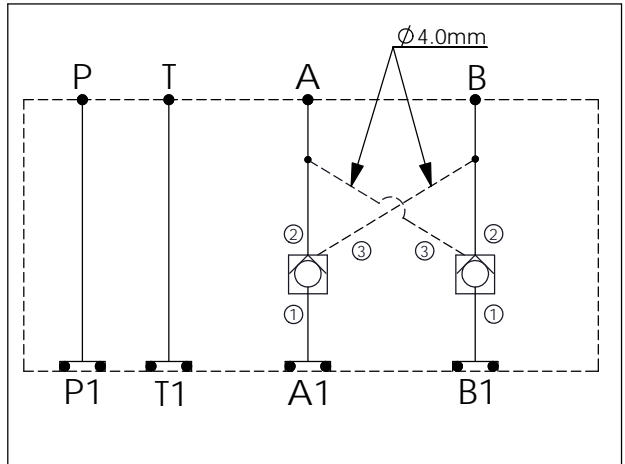
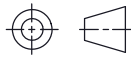


ISO 05 SANDWICH MANIFOLD

Ordering Code: **MH05CDW-X-Y-Z 01**
 Stack Height : 49.5mm



UNIT:mm



TECHNICAL DATA

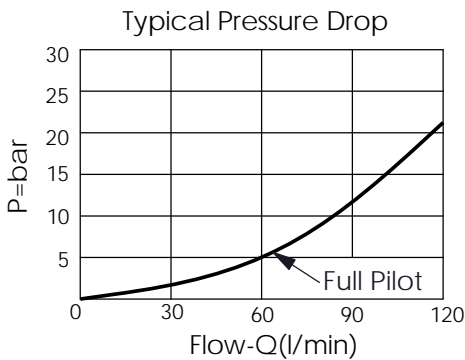
Aluminum Body Pressure Rating: 250 bar
 Ductile Iron Body Pressure Rating: 350 bar

Rated flow: 80 l/min

Cartridge Valve:
 Refer to CO2A-X-Y-Z
 * Refer to Winner Cartridge Valve Catalog.

Aluminum	0.85 kg(WITHOUT VALVES) 1.35 kg(INCLUDE VALVES)
Ductile Iron	2.4 kg(WITHOUT VALVES) 2.9 kg(INCLUDE VALVES)

* If you need the special specification. Please contact us.



X SELECTION FOR A PORT CONTROL

2A3	CAVITY ONLY(WITHOUT VALVE)
CO20	CO2A3020N (120LPM,2.0bar)
CO03	CO2A3003N (120LPM,0.3bar)
CO50	CO2A3050N (120LPM,5.0bar)

Y SELECTION FOR B PORT CONTROL

2A3	CAVITY ONLY(WITHOUT VALVE)
CO20	CO2A3020N (120LPM,2.0bar)
CO03	CO2A3003N (120LPM,0.3bar)
CO50	CO2A3050N (120LPM,5.0bar)

Z BODY MATERIAL

A	HIGH-STRENGTH ALUMINUM
S	DUCTILE IRON