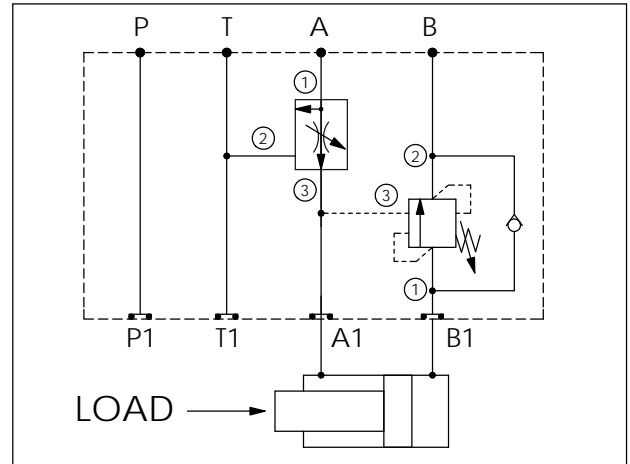


Ordering Code: **MH03CFW-X-Y-Z 01**

Stack Height : 44.5mm

UNIT:mm



### TECHNICAL DATA

Aluminum Body Pressure Rating: 250 bar  
 Ductile Iron Body Pressure Rating: 350 bar

Rated flow: 40 l/min

Cartridge Valve:  
 Refer to FR10W-X-Y-Z  
 CB11A-X-Y-Z

\* Refer to Winner Cartridge Valves Catalog.

Aluminum	0.5 kg(WITHOUT VALVES) 0.8 kg(INCLUDE VALVES)
----------	--

\* If you need the special specification. Please contact us.

Y	SELECTION FOR B PORT CONTROL	
<b>11A3</b>	CAVITY ONLY(WITHOUT VALVE)	
<b>CB3H</b>	CB11A33HL ( 3:1 , 280bar)	
<b>CB4J</b>	CB11A34JL (4.5:1 , 350bar)	
<b>CB0J</b>	CB11A30JL (10:1 , 350bar)	

X	SELECTION FOR A PORT CONTROL	
<b>10W3</b>	CAVITY ONLY(WITHOUT VALVE)	
<b>FR3L</b>	FR10W33NL (38LPM,240bar)	

Z	BODY MATERIAL	
<b>A</b>	HIGH-STRENGTH ALUMINUM	

