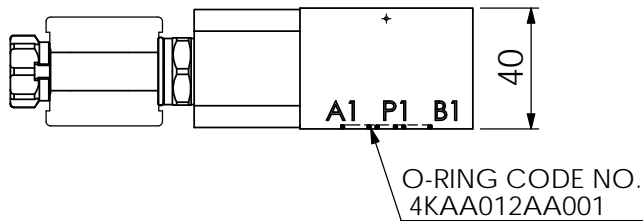
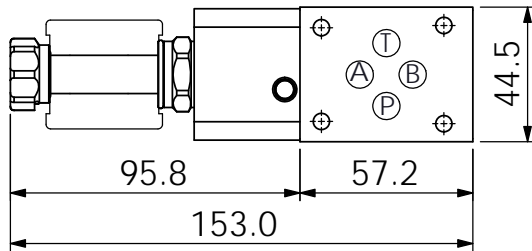
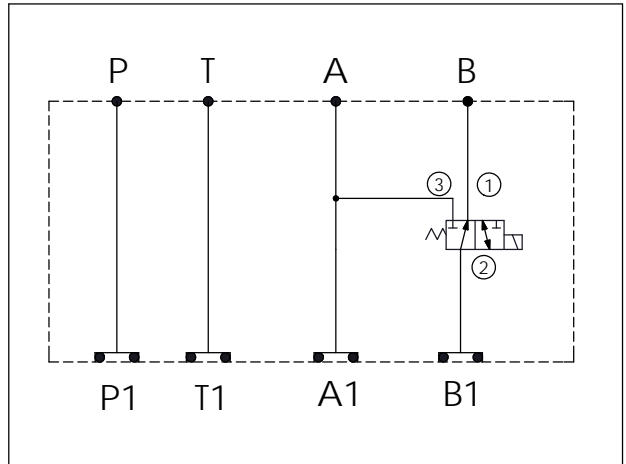
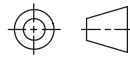


Ordering Code: MH03DBE-X-Y-Z 02
Stack Height : 40.0mm



UNIT:mm



TECHNICAL DATA

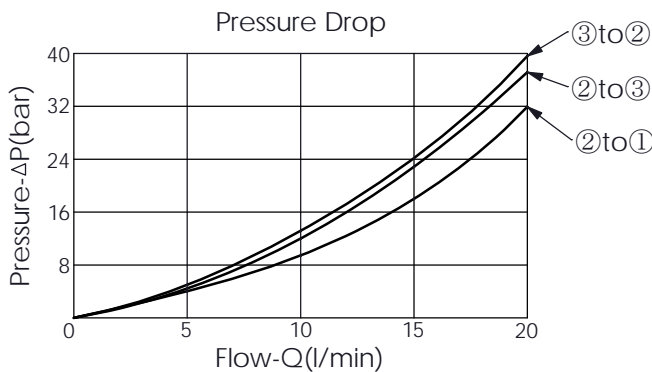
Aluminum Body Pressure Rating: 250 bar
 Ductile Iron Body Pressure Rating: 350 bar

Rated flow: 15 l/min

Cartridge Valve:
 Refer to ES08W-X-Y-Z
 * Refer to Winner Cartridge Valves Catalog.

Aluminum	0.4 kg(WITHOUT VALVES) 0.53 kg(INCLUDE VALVES, WITHOUT COIL)
----------	---

* If you need the special specification. Please contact us.



X	SELECTION FOR A PORT CONTROL
N	WITHOUT PORT

Y	SELECTION FOR B PORT CONTROL (REFER TO ES08W-X-Y-Z)
08W3	CAVITY ONLY(WITHOUT VALVE)
ES10	ES08W3A10N04 , 15LPM,210bar (SPOOL 3-WAY,WITHOUT COIL)
ES10M	ES08W3A10M04 , 15LPM,210bar(NORMALLY CLOSED WITH KNOB STYLE MANUAL OVERRIDE,WITHOUT COIL)
COIL MUST BE ORDERED SEPARATELY (REFER TO EC-04W-X-Y-Z)	

Z	BODY MATERIAL
A	HIGH-STRENGTH ALUMINUM