

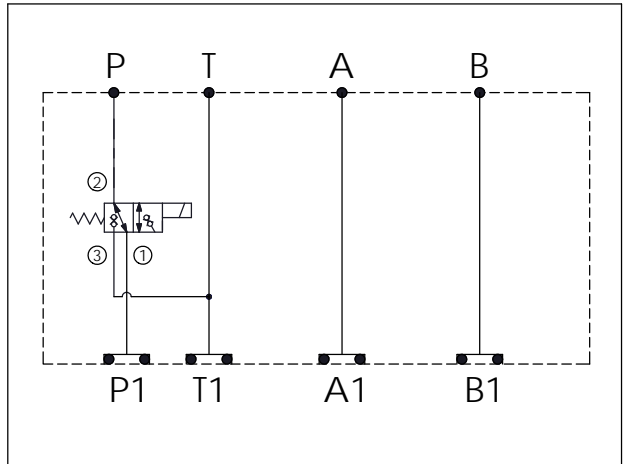
## ISO 03 SANDWICH MANIFOLD

Ordering Code: **MH03DPE-X-Y-Z 01**

Stack Height : 44.5mm

O-RING CODE NO.  
4KAA012AA001

UNIT:mm



### TECHNICAL DATA

Aluminum Body Pressure Rating: 250 bar

Ductile Iron

Body Pressure Rating: 350 bar

Rated flow: 25 l/min

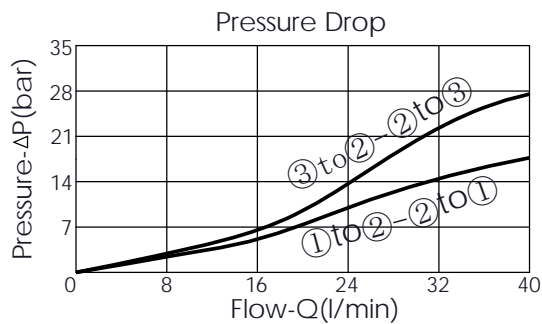
Cartridge Valve:

Refer to EP10W-X-Y-Z

\* Refer to Winner Cartridge Valves Catalog.

Aluminum	0.4 kg(WITHOUT VALVES)
	0.6 kg(INCLUDE VALVES ,WITHOUT COIL)

\* If you need the special specification.  
Please contact us.



Y	SELECTION FOR G PORT
N	WITHOUT PORT

X	SELECTION FOR P PORT CONTROL (REFER TO EP10W-X-Y-Z)
10W3	CAVITY ONLY(WITHOUT VALVE)
EP53	EP10W3C53N04 , 25LPM,250bar (WITHOUT COIL)
EP53P	EP10W3C53P04 , 25LPM,250bar(WITH PUSH STYLE MANUAL OVERRIDE,WITHOUT COIL)

COIL MUST BE ORDERED SEPARATELY  
(REFER TO EC-16B-X-Y-Z)

Z	BODY MATERIAL
A	HIGH-STRENGTH ALUMINUM