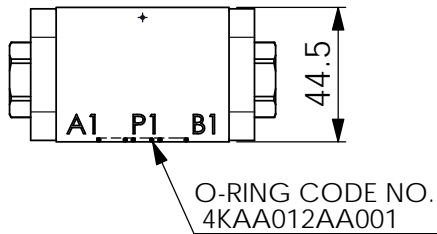
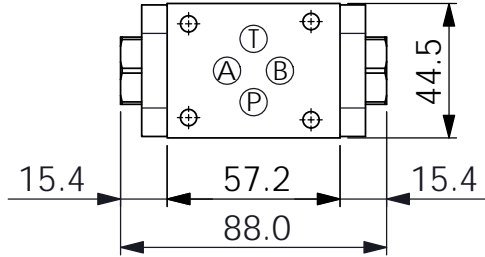
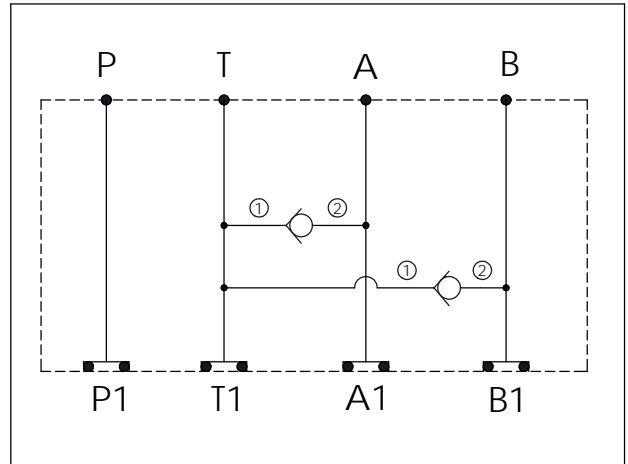
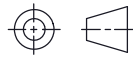


Ordering Code: MH03EDT-X-Y-Z01
Stack Height : 44.5mm



UNIT:mm



TECHNICAL DATA

Aluminum Body Pressure Rating: 250 bar

Ductile Iron Body Pressure Rating: 350 bar

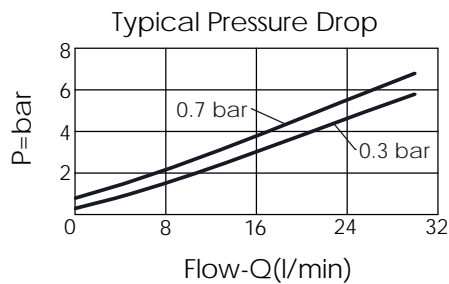
Rated flow: 30 l/min

Cartridge Valve:
Refer to CV08W-X-Y-Z

* Refer to Winner Cartridge Valves Catalog.

Aluminum	0.33 kg(WITHOUT VALVES) 0.45 kg(INCLUDE VALVES)
Ductile Iron	0.94 kg(WITHOUT VALVES) 1.06 kg(INCLUDE VALVES)

* If you need the special specification. Please contact us.



X SELECTION FOR A PORT CONTROL

08W2	CAVITY ONLY(WITHOUT VALVE)	
CV03	CV08W2003N (30LPM,0.3bar)	

Y SELECTION FOR B PORT CONTROL

08W2	CAVITY ONLY(WITHOUT VALVE)	
CV03	CV08W2003N (30LPM,0.3bar)	

Z BODY MATERIAL

A	HIGH-STRENGTH ALUMINUM	
S	DUCTILE IRON	