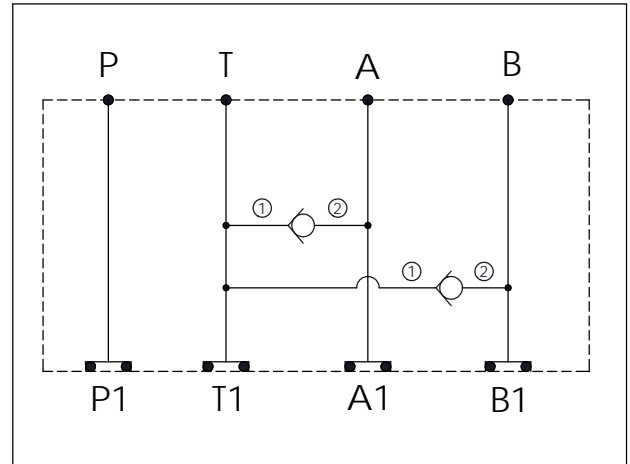


Ordering Code: **MH03EDT-X-Y-Z02**

Stack Height : 40.0mm

UNIT:mm



TECHNICAL DATA

Aluminum Body Pressure Rating: 250 bar
 Ductile Iron Body Pressure Rating: 350 bar

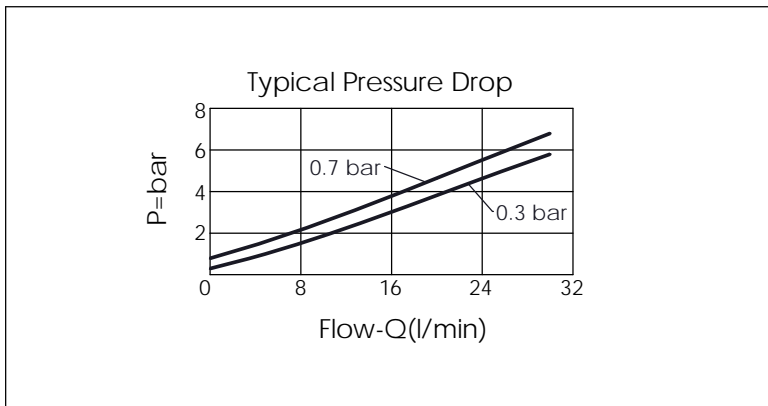
Rated flow: 30 l/min

Cartridge Valve:
 Refer to CV08W-X-Y-Z

* Refer to Winner Cartridge Valves Catalog.

Aluminum	0.29 kg(WITHOUT VALVES) 0.4 kg(INCLUDE VALVES)
----------	---

* If you need the special specification. Please contact us.



Y	SELECTION FOR B PORT CONTROL	
08W2	CAVITY ONLY(WITHOUT VALVE)	
CV03	CV08W2003N (30LPM,0.3bar)	

X	SELECTION FOR A PORT CONTROL	
08W2	CAVITY ONLY(WITHOUT VALVE)	
CV03	CV08W2003N (30LPM,0.3bar)	

Z	BODY MATERIAL	
A	HIGH-STRENGTH ALUMINUM	