

## ISO 03 SANDWICH MANIFOLD

Ordering Code: **MH03EFB-X-Y-Z02**

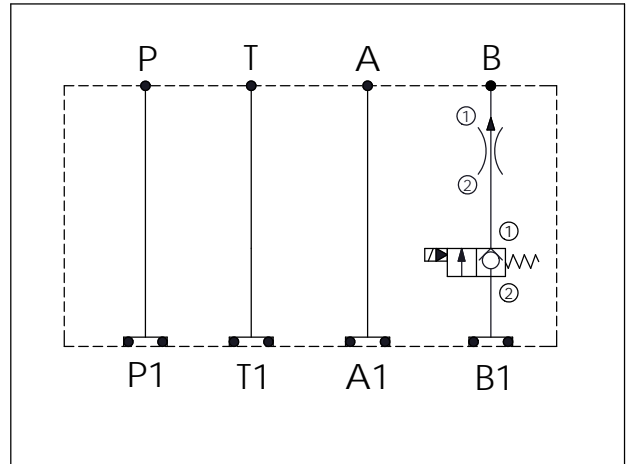
Stack Height : 40.0mm

Dimensions: 57.2, 102.7, 159.9, 44.5

Ports: A, B, P, T

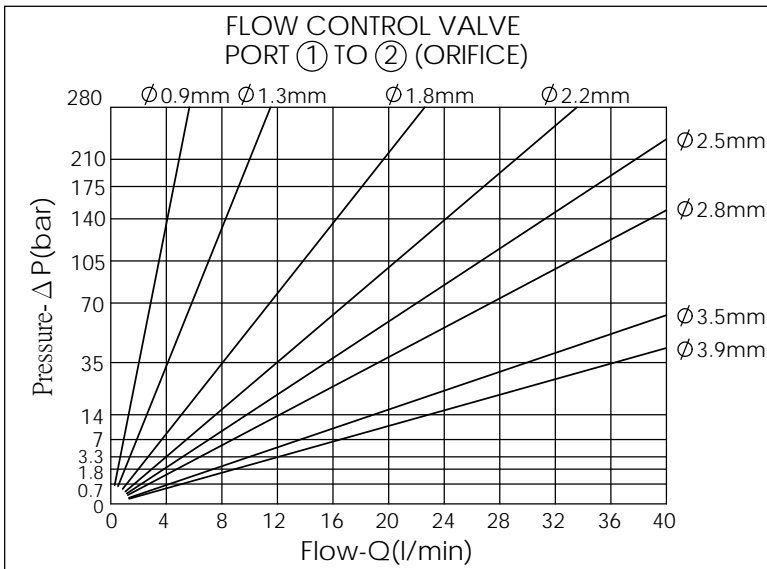
Labels: FLOW CONTROL VALVE, SOLENOID VALVE, O-RING CODE NO. 4KAA012AA001

UNIT:mm



TECHNICAL DATA	
Aluminum Body Pressure Rating:	250 bar
Ductile Iron Body Pressure Rating:	350 bar
Rated flow:	30 l/min
Cartridge Valve:	Refer to EP08W-X-Y-Z
* Refer to Winner Cartridge Valves Catalog.	
Aluminum	0.4 kg(WITHOUT VALVES) 0.55 kg(INCLUDE VALVES, WITHOUT COIL)

\* If you need the special specification. Please contact us.



Y	SELECTION FOR SOLENOID VALVE (REFER TO EP08W-X-Y-Z)	
08W2	CAVITY ONLY(WITHOUT VALVE)	
EP01	EP08W2A01N05 , 40LPM,350bar (NORMALLY CLOSED,WITHOUT COIL)	
EP01M	EP08W2A01M05 , 40LPM,350bar (NORMALLY CLOSEDWITH KNOB STYLE MANUAL OVERRIDE,WITHOUT COIL)	
COIL MUST BE ORDERED SEPARATELY (REFER TO EC-04W-X-Y-Z)		

X	SELECTION FOR FLOW CONTROL VALVE PORT ② TO ① PRESSURE COMPENSATED	
N	CAVITY ONLY (WITHOUT FLOW CONTROL VALVE)	
0100	1 LPM	PORT ① TO ② ORIFICE 0.9mm
0200	2 LPM	PORT ① TO ② ORIFICE 1.3mm
0400	4 LPM	PORT ① TO ② ORIFICE 1.8mm
0600	6 LPM	PORT ① TO ② ORIFICE 2.2mm
0800	8 LPM	PORT ① TO ② ORIFICE 2.5mm
1000	10 LPM	PORT ① TO ② ORIFICE 2.8mm
1600	16 LPM	PORT ① TO ② ORIFICE 3.5mm
2000	20 LPM	PORT ① TO ② ORIFICE 3.9mm

Z	BODY MATERIAL	
A	HIGH-STRENGTH ALUMINUM	