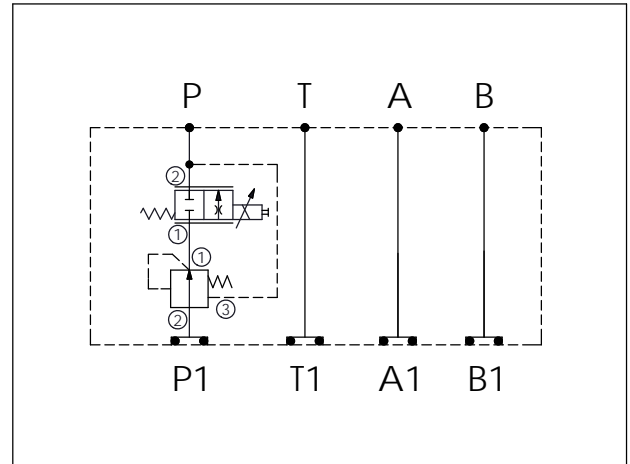


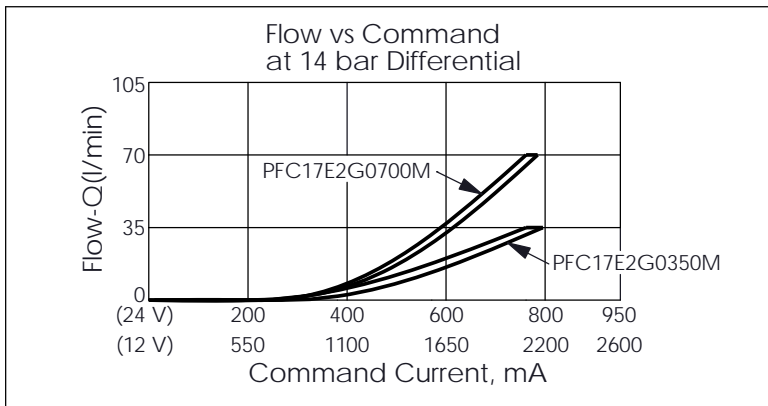
Ordering Code: **MH03EPP-X-Y-Z03**

Stack Height : 63.0mm

UNIT:mm



TECHNICAL DATA	
Aluminum Body Pressure Rating:	250 bar
Ductile Iron Body Pressure Rating:	350 bar
Rated flow:	40 l/min
Cartridge Valve:	Refer to LP11A-X-Y-Z PFC17E-X-Y-Z
* Refer to Winner Cartridge Valves Catalog.	
Aluminum	0.63 kg(WITHOUT VALVES) 1.2 kg(INCLUDE VALVES, WITHOUT COIL)
* If you need the special specification. Please contact us.	



Y	SELECTION FOR FLOW CONTROL VALVE (REFER TO PFC17E-X-Y-Z)
<b>17E2</b>	CAVITY ONLY(WITHOUT VALVE)
<b>PFC35</b>	PFC17E2G0350M(35LPM)
<b>PFC70</b>	PFC17E2G0700M(70LPM)

COIL MUST BE ORDERED SEPARATELY (REFER TO EC-23C-X-Y-Z)

X	SELECTION FOR COMPENSATOR
<b>11A3</b>	CAVITY ONLY(WITHOUT VALVE)
<b>LP140</b>	LP11A30140N(60LPM,14.0bar)

Z	BODY MATERIAL
<b>A</b>	HIGH-STRENGTH ALUMINUM