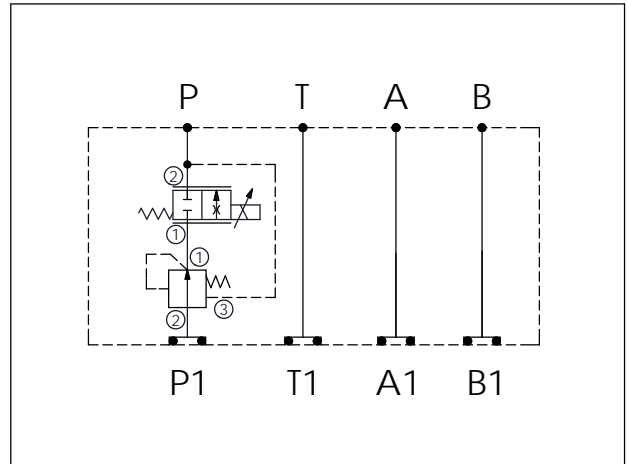
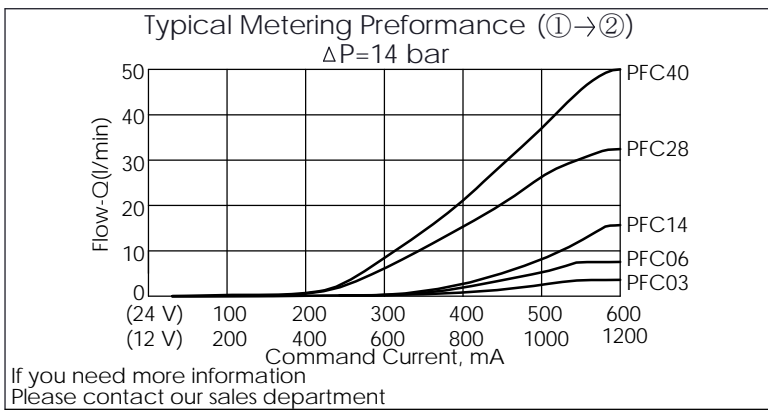


Ordering Code:	MH05EPP-X-Y-Z03
Stack Height :	63.0mm

UNIT:mm



TECHNICAL DATA	
Aluminum Body Pressure Rating:	250 bar
Ductile Iron Body Pressure Rating:	350 bar
Rated flow:	40 l/min
Cartridge Valve:	Refer to LP11A-X-Y-Z PFC13A-X-Y-Z
* Refer to Winner Cartridge Valves Catalog.	
Aluminum	0.95 kg(WITHOUT VALVES) 1.5 kg(INCLUDE VALVES ,WITHOUT COIL)
* If you need the special specification. Please contact us.	



Y	SELECTION FOR FLOW CONTROL VALVE (REFER TO PFC13A-X-Y-Z)
13A2	CAVITY ONLY(WITHOUT VALVE)
PFC03	PFC13A2D0030N(0.3~3LPM)
PFC06	PFC13A2D0060N(0.4~6LPM)
PFC14	PFC13A2D0140N(0.6~14LPM)
PFC28	PFC13A2D0280N(0.8~28LPM)
PFC40	PFC13A2D0400N(1.0~40LPM)
COIL MUST BE ORDERED SEPARATELY (REFER TO EC-19A-X-Y-Z)	

X	SELECTION FOR COMPENSATOR
11A3	CAVITY ONLY(WITHOUT VALVE)
LP140	LP11A30140N(60LPM,14.0bar)

Z	BODY MATERIAL
A	HIGH-STRENGTH ALUMINUM