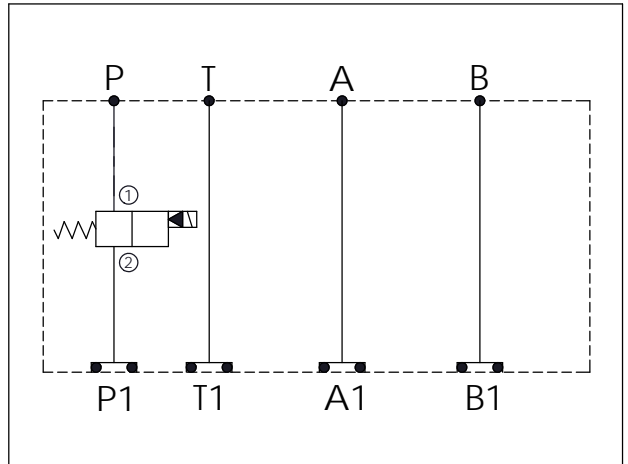


ISO 05 SANDWICH MANIFOLD

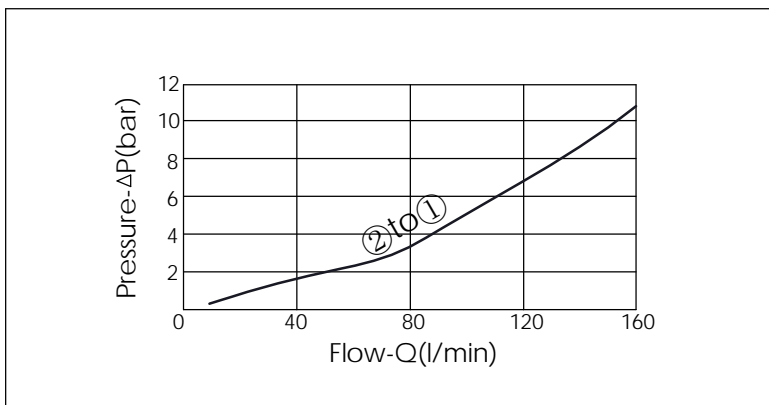
| | |
|----------------|------------------------|
| Ordering Code: | MH05EPW-X-Y-Z01 |
| Stack Height : | 49.5mm |

UNIT:mm



| TECHNICAL DATA | |
|------------------------------------|----------------------------------------------------------------|
| Aluminum Body Pressure Rating: | 250 bar |
| Ductile Iron Body Pressure Rating: | 350 bar |
| Rated flow: | 80 l/min |
| Cartridge Valve: | Refer to EP12W-X-Y-Z |
| | * Refer to Winner Cartridge Valves Catalog. |
| Aluminum | 0.72 kg(WITHOUT VALVE) 0.95 kg(INCLUDE VALVE, WITHOUT COIL) |
| Ductile Iron | 2.1 kg(WITHOUT VALVE) 2.33 kg(INCLUDE VALVE, WITHOUT COIL) |

* If you need the special specification. Please contact us.



| Y | SELECTION FOR G PORT |
|---|----------------------|
| N | WITHOUT PORT |
| | |
| | |
| | |
| | |
| | |

| X | SELECTION FOR P PORT CONTROL (REFER TO EP12W-X-Y-Z) |
|-------|--------------------------------------------------------------------------------------------|
| 12W2 | CAVITY ONLY(WITHOUT VALVE) |
| EP01 | EP12W2A01N05 , 150LPM,350bar (NORMALLY CLOSED,WITHOUT COIL) |
| EP02 | EP12W2A02N05 , 150LPM,350bar (NORMALLY OPEN,WITHOUT COIL) |
| EP01M | EP12W2A01M05 , 150LPM,350bar(NORMALLY CLOSED WITH KNOB STYLE MANUAL OVERRIDE,WITHOUT COIL) |
| EP02P | EP12W2A02P05 , 150LPM,350bar(NORMALLY OPEN WITH PUSH STYLE MANUAL OVERRIDE,WITHOUT COIL) |

COIL MUST BE ORDERED SEPARATELY (REFER TO EC-04W-X-Y-Z)

| Z | BODY MATERIAL |
|---|------------------------|
| A | HIGH-STRENGTH ALUMINUM |
| S | DUCTILE IRON |
| | |
| | |