

Ordering Code:	<b>MK03EPX-X-Y-Z 03</b>
Stack Height :	63.0mm

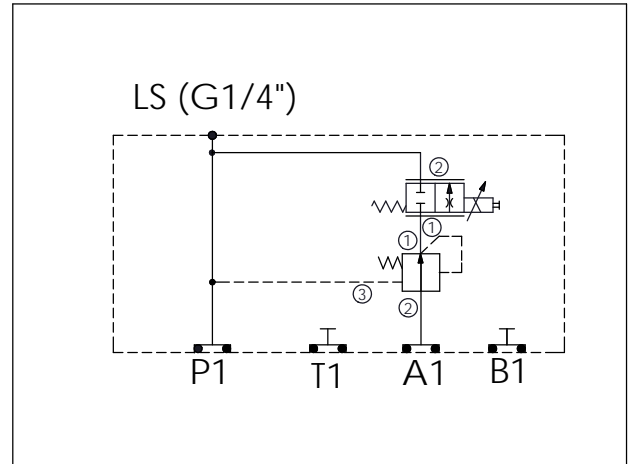
  

Technical drawing showing dimensions (mm):

- Overall length: 207.0
- Port P1 to start: 35.2
- Port T1 to start: 57.2
- Port A1 to start: 114.6
- Port B1 to start: 114.6
- Height: 44.5
- Height at A1, P1, B1: 67.3
- Height at P1, T1, A1, B1: 63.0

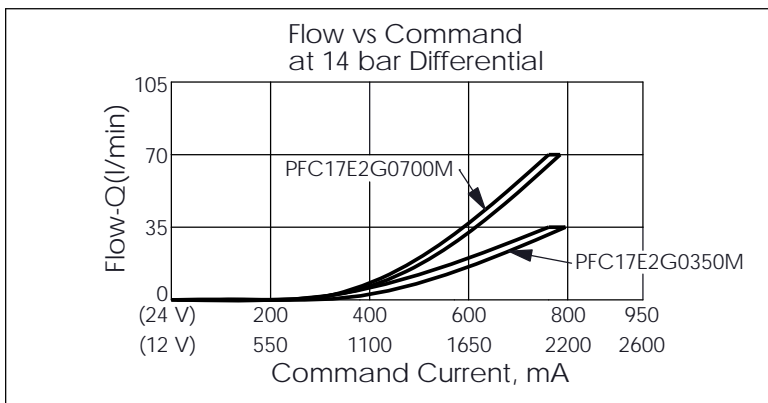
O-RING CODE NO. 4KAA012AA001

UNIT:mm



TECHNICAL DATA	
Aluminum Body Pressure Rating:	250 bar
Ductile Iron Body Pressure Rating:	350 bar
Rated flow:	40 l/min
Cartridge Valve:	Refer to LP11A-X-Y-Z PFC17E-X-Y-Z
* Refer to Winner Cartridge Valves Catalog.	
Aluminum	0.63 kg(WITHOUT VALVES) 1.2 kg(INCLUDE VALVES ,WITHOUT COIL)

\* If you need the special specification. Please contact us.



Y	SELECTION FOR FLOW CONTROL VALVE (REFER TO PFC17E-X-Y-Z)
<b>17E2</b>	CAVITY ONLY(WITHOUT VALVE)
<b>PFC35</b>	PFC17E2G0350M(35LPM)
<b>PFC70</b>	PFC17E2G0700M(70LPM)
COIL MUST BE ORDERED SEPARATELY (REFER TO EC-23C-X-Y-Z)	

X	SELECTION FOR COMPENSATOR
<b>11A3</b>	CAVITY ONLY(WITHOUT VALVE)
<b>LP140</b>	LP11A30140N(60LPM,14.0bar)

Z	BODY MATERIAL
<b>A</b>	HIGH-STRENGTH ALUMINUM