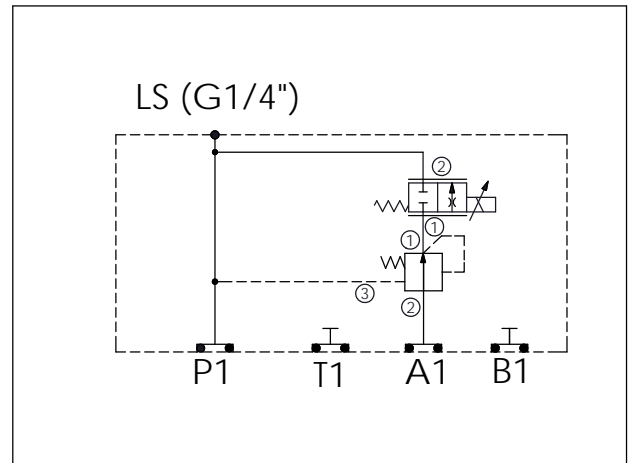


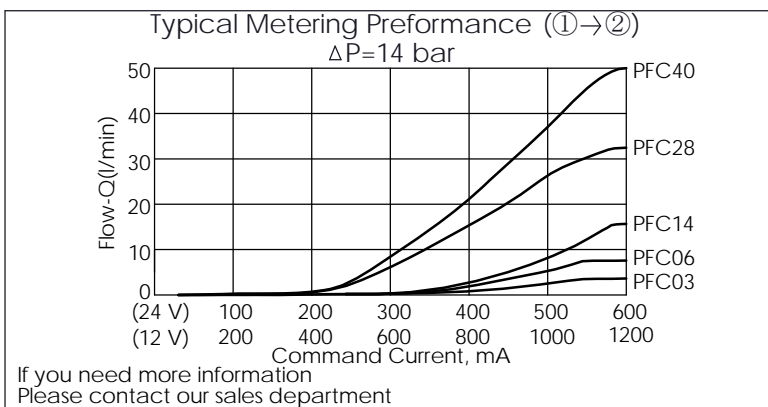
Ordering Code:	MK05EPX-X-Y-Z03
Stack Height :	63.0mm

UNIT:mm



TECHNICAL DATA	
Aluminum Body Pressure Rating:	250 bar
Ductile Iron Body Pressure Rating:	350 bar
Rated flow:	40 l/min
Cartridge Valve:	Refer to LP11A-X-Y-Z PFC13A-X-Y-Z
* Refer to Winner Cartridge Valves Catalog.	
Aluminum	0.95 kg(WITHOUT VALVES) 1.5 kg(INCLUDE VALVES ,WITHOUT COIL)

* If you need the special specification. Please contact us.



Y	SELECTION FOR FLOW CONTROL VALVE (REFER TO PFC13A-X-Y-Z)	
13A2	CAVITY ONLY(WITHOUT VALVE)	
PFC03	PFC13A2D0030N(0.3~3LPM)	
PFC06	PFC13A2D0060N(0.4~6LPM)	
PFC14	PFC13A2D0140N(0.6~14LPM)	
PFC28	PFC13A2D0280N(0.8~28LPM)	
PFC40	PFC13A2D0400N(1.0~40LPM)	
COIL MUST BE ORDERED SEPARATELY (REFER TO EC-19A-X-Y-Z)		

X	SELECTION FOR COMPENSATOR	
11A3	CAVITY ONLY(WITHOUT VALVE)	
LP140	LP11A30140N(60LPM,14.0bar)	

Z	BODY MATERIAL	
A	HIGH-STRENGTH ALUMINUM	