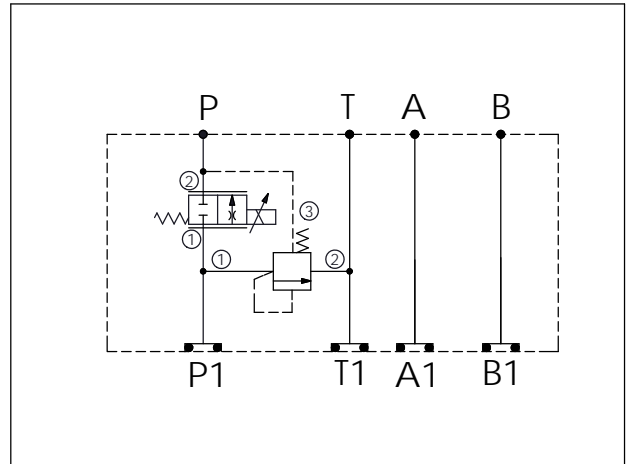


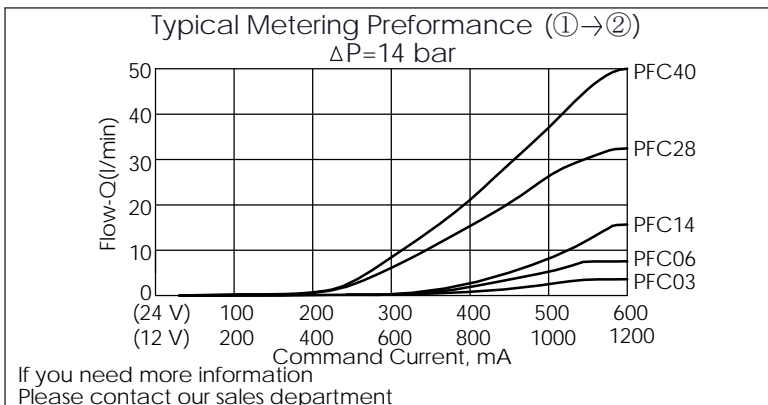
Ordering Code:	MH05ERW-X-Y-Z03
Stack Height :	63.0mm

Technical drawing showing side and front views of the ISO 05 Sandwich Manifold. Dimensions are in mm. Side view shows a total length of 204.9 mm, with segments of 101.1 mm, 76.2 mm, and 27.6 mm. The height is 63.0 mm. Front view shows ports labeled P1, T1, A1, and B1. An O-RING CODE NO. 4KAA014AA001 is indicated for the front view.

UNIT:mm



TECHNICAL DATA	
Aluminum Body Pressure Rating:	250 bar
Ductile Iron Body Pressure Rating:	350 bar
Rated flow:	40 l/min
Cartridge Valve:	Refer to LR11A-X-Y-Z PFC13A-X-Y-Z
* Refer to Winner Cartridge Valves Catalog.	
Aluminum	0.95 kg(WITHOUT VALVES) 1.5 kg(INCLUDE VALVES, WITHOUT COIL)
* If you need the special specification. Please contact us.	



Y	SELECTION FOR FLOW CONTROL VALVE (REFER TO PFC13A-X-Y-Z)
13A2	CAVITY ONLY(WITHOUT VALVE)
PFC03	PFC13A2D0030N(0.3~3LPM)
PFC06	PFC13A2D0060N(0.4~6LPM)
PFC14	PFC13A2D0140N(0.6~14LPM)
PFC28	PFC13A2D0280N(0.8~28LPM)
PFC40	PFC13A2D0400N(1.0~40LPM)
COIL MUST BE ORDERED SEPARATELY (REFER TO EC-19A-X-Y-Z)	

X	SELECTION FOR COMPENSATOR
11A3	CAVITY ONLY(WITHOUT VALVE)
LR140	LR11A30140N(60LPM,14.0bar)

Z	BODY MATERIAL
A	HIGH-STRENGTH ALUMINUM