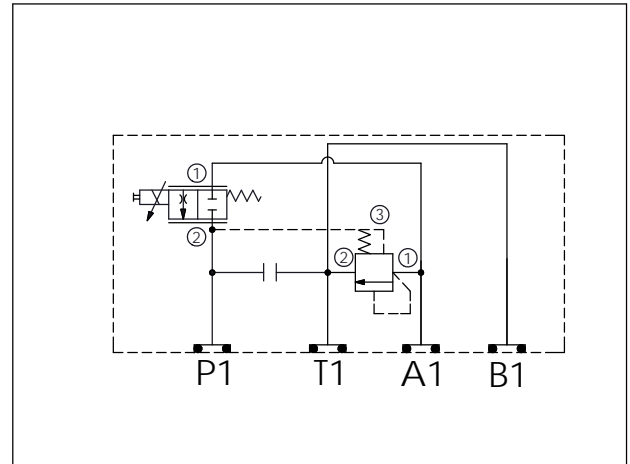


Ordering Code: **MK03ERX-X-Y-A03-Z**

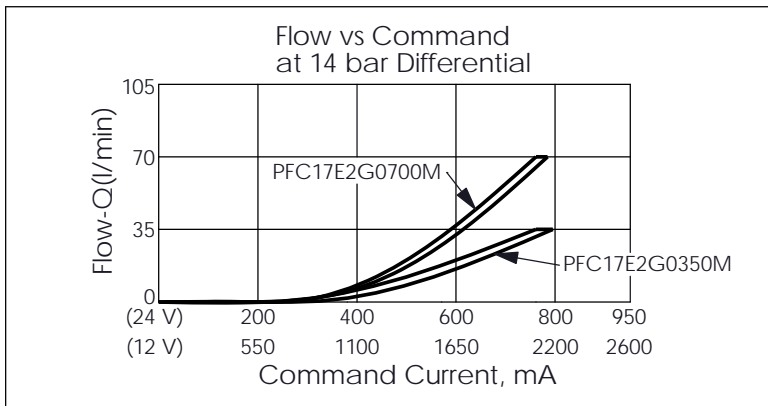
Stack Height : 63.0mm

UNIT:mm



TECHNICAL DATA	
Aluminum Body Pressure Rating:	250 bar
Ductile Iron Body Pressure Rating:	350 bar
Rated flow:	40 l/min
Cartridge Valve:	Refer to LR11A-X-Y-Z PFC17E-X-Y-Z
* Refer to Winner Cartridge Valves Catalog.	
Aluminum	0.63 kg(WITHOUT VALVES) 1.2 kg(INCLUDE VALVES ,WITHOUT COIL)

\* If you need the special specification. Please contact us.



Y	SELECTION FOR FLOW CONTROL VALVE (REFER TO PFC17E-X-Y-Z)
17E2	CAVITY ONLY(WITHOUT VALVE)
PFC35	PFC17E2G0350M(35LPM)
PFC70	PFC17E2G0700M(70LPM)
COIL MUST BE ORDERED SEPARATELY (REFER TO EC-23C-X-Y-Z)	

X	SELECTION FOR COMPENSATOR
11A3	CAVITY ONLY(WITHOUT VALVE)
LR140	LR11A30140N(60LPM,14.0bar)

Z	ORIFICE DIAMETER (mm)
	without orifice
05	∅ 0.5 mm
07	∅ 0.7 mm