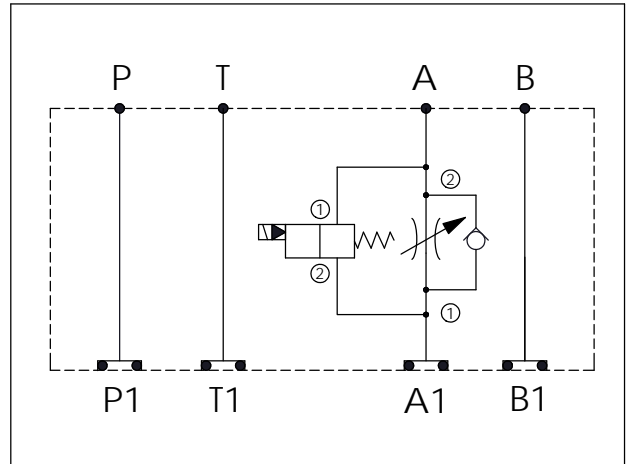


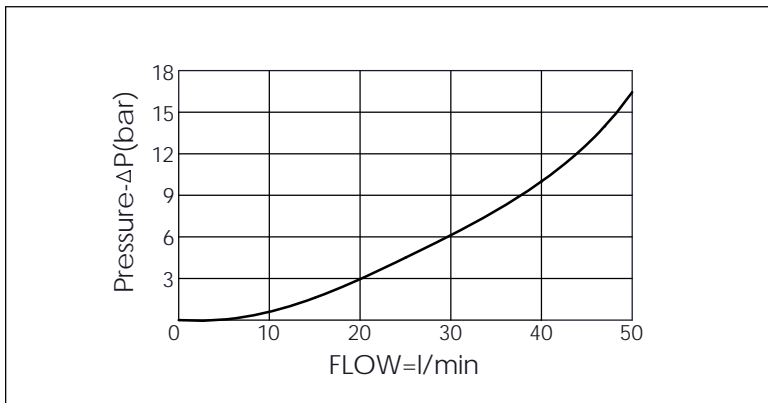
Ordering Code:	MH05FAE-X-Y-Z03
Stack Height :	63.0mm

Technical drawing showing front and side views of the ISO 05 sandwich manifold. Dimensions are provided in millimeters (mm). The front view shows a total length of 239.9 mm, with segments of 82.6 mm, 76.2 mm, and 81.1 mm. The height is 63.0 mm. Ports are labeled P, T, A, B on the top and P1, T1, A1, B1 on the bottom. The side view shows the O-ring code no. 4KAA014AA001. A note indicates 'UNIT:mm' and includes a symbol for a chamfered end.



TECHNICAL DATA	
Aluminum Body Pressure Rating:	250 bar
Ductile Iron Body Pressure Rating:	350 bar
Rated flow:	80 l/min
Cartridge Valve:	Refer to NC5A-X-Y-Z EP12W-X-Y-Z
* Refer to Winner Cartridge Valves Catalog.	
Aluminum	1.05 kg(WITHOUT VALVES) 1.55 kg(INCLUDE VALVES ,WITHOUT COIL)

* If you need the special specification. Please contact us.



Y	SELECTION FOR SOLENOID VALVES (REFER TO EP12W-X-Y-Z)	
12W2	CAVITY ONLY(WITHOUT VALVE)	
EP01	EP12W2A01N05 , 150LPM,350bar (NORMALLY CLOSED,WITHOUT COIL)	
EP02	EP12W2A02N05 , 150LPM,350bar (NORMALLY OPEN,WITHOUT COIL)	
EP01M	EP12W2A01M05 , 150LPM,350bar(NORMALLY CLOSED WITH KNOB STYLE MANUAL OVERRIDE,WITHOUT COIL)	
EP02P	EP12W2A02P05 , 150LPM,350bar(NORMALLY OPEN WITH PUSH STYLE MANUAL OVERRIDE,WITHOUT COIL)	
COIL MUST BE ORDERED SEPARATELY (REFER TO EC-04W-X-Y-Z)		

X	SELECTION FOR FLOW CONTROL	
5A2	CAVITY ONLY(WITHOUT VALVE)	
NCBC	NC5A21BCL (2.0bar)	

Z	BODY MATERIAL	
A	HIGH-STRENGTH ALUMINUM	