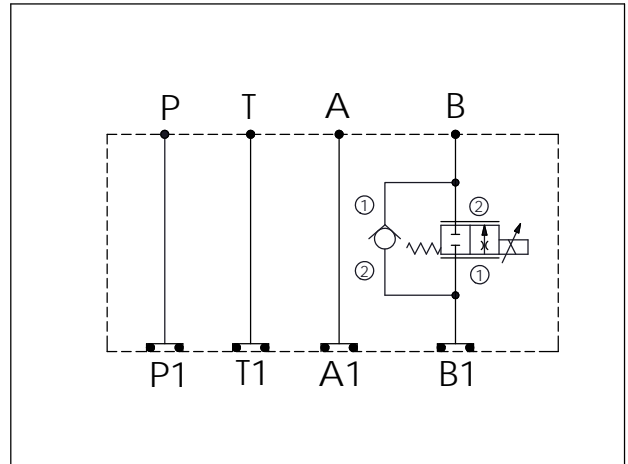


Ordering Code:	<b>MH05FBD-X-Y-Z 01</b>
Stack Height :	49.5mm

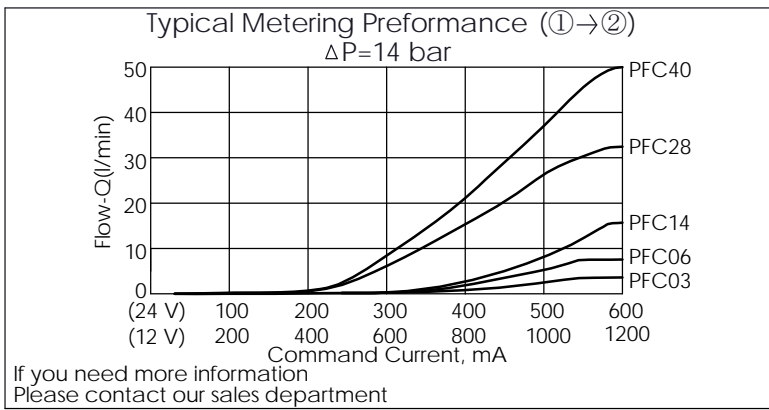
  

UNIT:mm



TECHNICAL DATA	
Aluminum Body Pressure Rating:	250 bar
Ductile Iron Body Pressure Rating:	350 bar
Rated flow:	40 l/min
Cartridge Valve:	Refer to PFC13A-X-Y-Z CV13A-X-Y-Z
* Refer to Winner Cartridge Valves Catalog.	
Aluminum	0.8 kg(WITHOUT VALVES) 1.45 kg(INCLUDE VALVES ,WITHOUT COIL)

\* If you need the special specification. Please contact us.



Y	SELECTION FOR CHECK VALVE
<b>13A2</b>	CAVITY ONLY(WITHOUT VALVE)
<b>CV20</b>	CV13A2020N (80LPM,2.0bar)

X	SELECTION FOR FLOW CONTROL VALVE (REFER TO PFC13A-X-Y-Z)
<b>13A2</b>	CAVITY ONLY(WITHOUT VALVE)
<b>PFC03</b>	PFC13A2D0030N(0.3~3LPM)
<b>PFC06</b>	PFC13A2D0060N(0.4~6LPM)
<b>PFC14</b>	PFC13A2D0140N(0.6~14LPM)
<b>PFC28</b>	PFC13A2D0280N(0.8~28LPM)
<b>PFC40</b>	PFC13A2D0400N(1.0~40LPM)
COIL MUST BE ORDERED SEPARATELY (REFER TO EC-19A-X-Y-Z)	

Z	BODY MATERIAL
<b>A</b>	HIGH-STRENGTH ALUMINUM