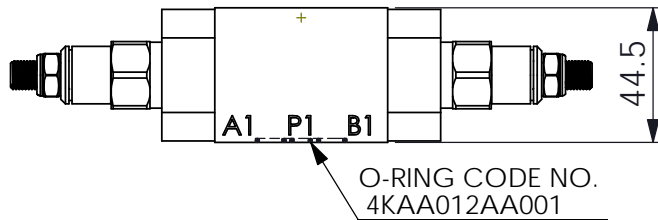
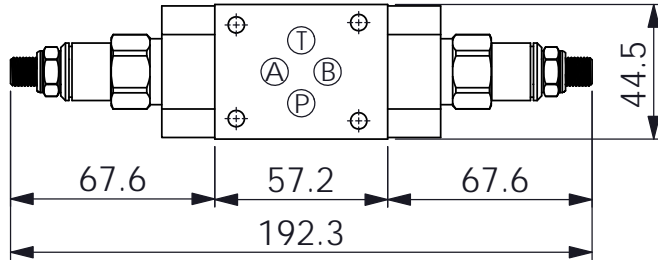
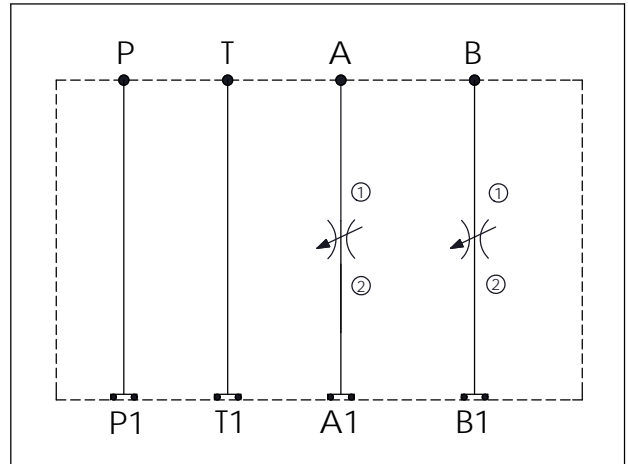


Ordering Code:	<b>MH03FDI-X-Y-Z 01</b>
Stack Height :	44.5mm



UNIT:mm



### TECHNICAL DATA

Aluminum Body Pressure Rating: 250 bar  
 Ductile Iron Body Pressure Rating: 350 bar

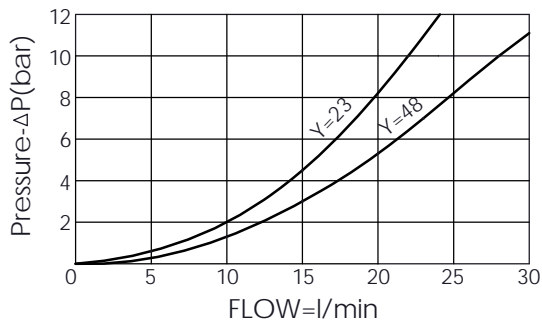
Rated flow: 40 l/min

Cartridge Valve:  
 Refer to NV13A-X-Y-Z  
 \* Refer to Winner Cartridge Valves Catalog.

Aluminum	0.4 kg(WITHOUT VALVES) 0.7 kg(INCLUDE VALVES)
Ductile Iron	1.15 kg(WITHOUT VALVES) 1.45 kg(INCLUDE VALVES)

\* If you need the special specification.  
 Please contact us.

FULLY OPEN RESTRICTOR-FLOW IN BOTH DIRECTIONS



### X SELECTION FOR A PORT CONTROL

<b>13A2</b>	CAVITY ONLY(WITHOUT VALVE)
<b>NV48</b>	NV13A2048L (350bar)

### Y SELECTION FOR B PORT CONTROL

<b>13A2</b>	CAVITY ONLY(WITHOUT VALVE)
<b>NV48</b>	NV13A2048L (350bar)

### Z BODY MATERIAL

<b>A</b>	HIGH-STRENGTH ALUMINUM
<b>S</b>	DUCTILE IRON