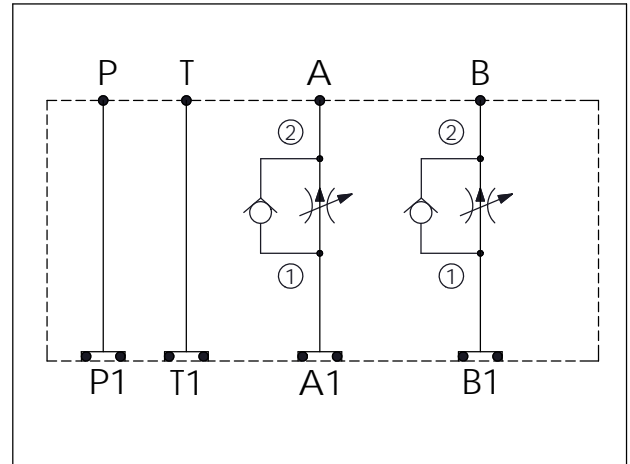


## ISO 05 SANDWICH MANIFOLD

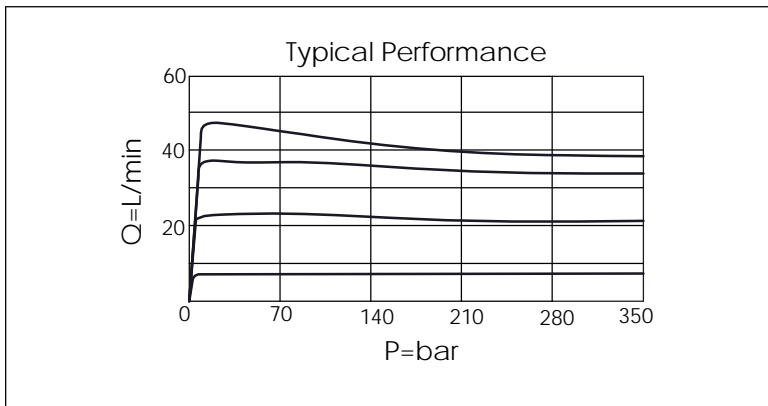
Ordering Code:	<b>MH05FDO-X-Y-Z01</b>
Stack Height :	49.5mm

UNIT:mm



TECHNICAL DATA	
Aluminum Body Pressure Rating:	250 bar
Ductile Iron Body Pressure Rating:	350 bar
Rated flow:	45 l/min (Pressure Compensated)
Cartridge Valve:	Refer to FR5A-X-Y-Z
* Refer to Winner Cartridge Valves Catalog.	
Aluminum	0.73 kg(WITHOUT VALVES) 1.27 kg(INCLUDE VALVES)
Ductile Iron	2.13 kg(WITHOUT VALVES) 2.67 kg(INCLUDE VALVES)
* If you need the special specification. Please contact us.	



X	SELECTION FOR A PORT CONTROL
<b>5A2</b>	CAVITY ONLY(WITHOUT VALVE)
<b>FR0A</b>	FR5A20AL (45 LPM , 350bar)

Y	SELECTION FOR B PORT CONTROL
<b>5A2</b>	CAVITY ONLY(WITHOUT VALVE)
<b>FR0A</b>	FR5A20AL (45 LPM , 350bar)

Z	BODY MATERIAL
<b>A</b>	HIGH-STRENGTH ALUMINUM
<b>S</b>	DUCTILE IRON