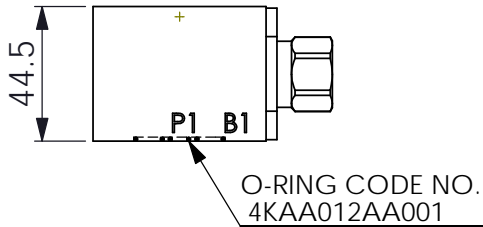
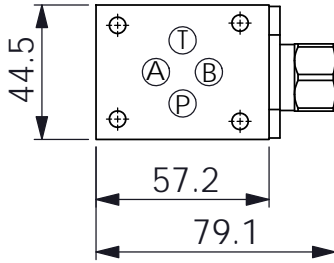
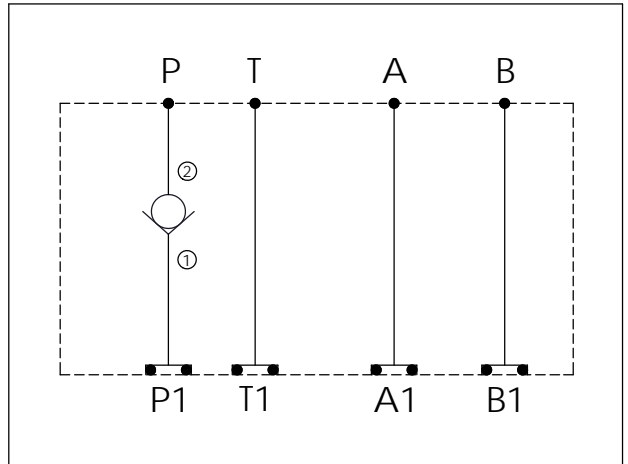
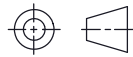


ISO 03 SANDWICH MANIFOLD

Ordering Code: **MH03FPW-X-Y-Z01**
 Stack Height : 44.5mm



UNIT:mm



TECHNICAL DATA

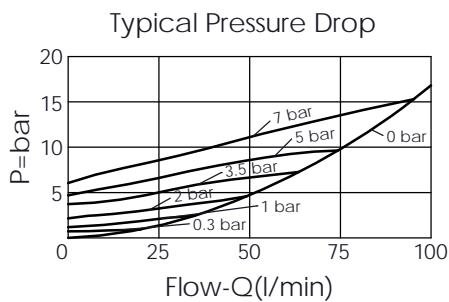
Aluminum Body Pressure Rating: 250 bar
 Ductile Iron Body Pressure Rating: 350 bar

Rated flow: 40 l/min

Cartridge Valve:
 Refer to CV13A-X-Y-Z
 * Refer to Winner Cartridge Valves Catalog.

Aluminum	0.27 kg(WITHOUT VALVE) 0.37 kg(INCLUDE VALVE)
Ductile Iron	0.77 kg(WITHOUT VALVE) 0.87 kg(INCLUDE VALVE)

* If you need the special specification. Please contact us.



X SELECTION FOR P PORT CONTROL

13A2	CAVITY ONLY(WITHOUT VALVE)
CV20	CV13A2020N (80LPM,2.0bar)

Y SELECTION FOR G PORT

N WITHOUT PORT

Z BODY MATERIAL

A HIGH-STRENGTH ALUMINUM

S DUCTILE IRON