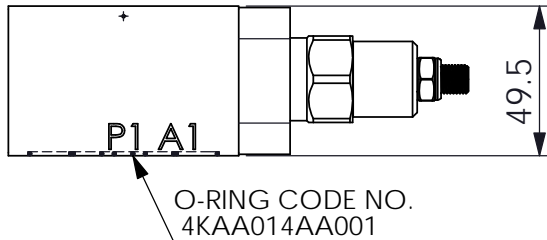
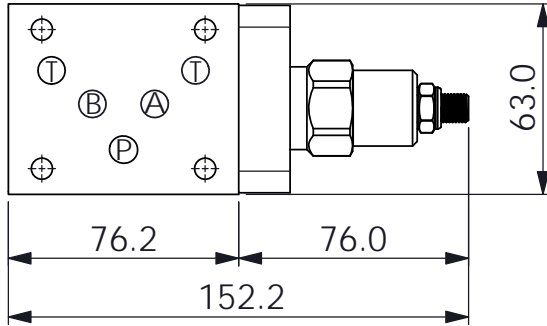
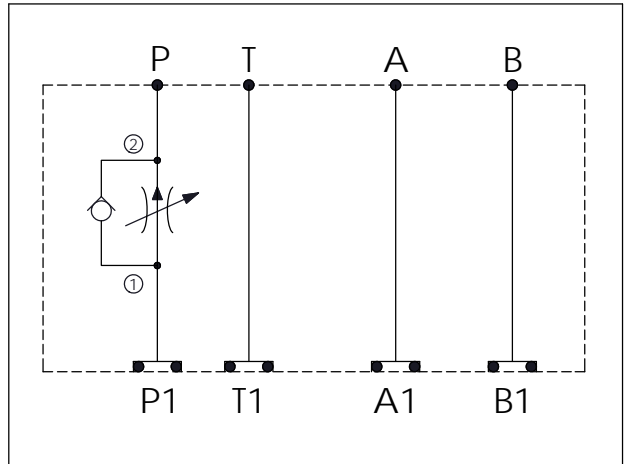
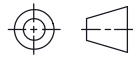


ISO 05 SANDWICH MANIFOLD

Ordering Code: **MH05FPW-X-Y-Z01**
 Stack Height : 49.5mm



UNIT:mm



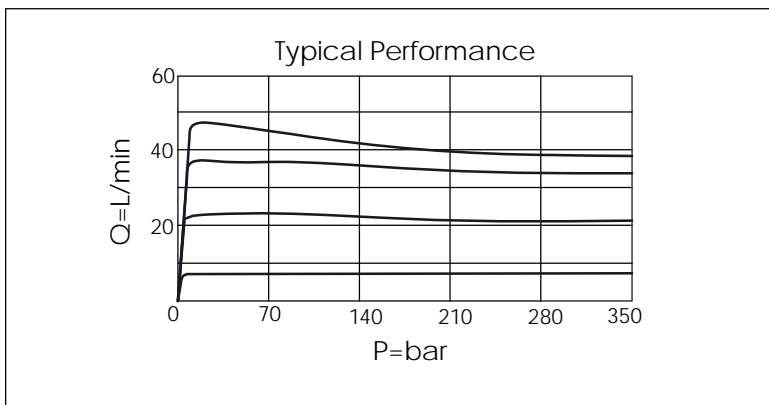
TECHNICAL DATA

Aluminum Body Pressure Rating: 250 bar
 Ductile Iron Body Pressure Rating: 350 bar
 Rated flow: 45 l/min (Pressure Compensated)

Cartridge Valve:
 Refer to FR5A-X-Y-Z
 * Refer to Winner Cartridge Valves Catalog.

Aluminum	0.64 kg(WITHOUT VALVE) 0.91 kg(INCLUDE VALVE)
Ductile Iron	1.87 kg(WITHOUT VALVES) 2.14 kg(INCLUDE VALVES)

* If you need the special specification. Please contact us.



X	SELECTION FOR P PORT CONTROL	
5A2	CAVITY ONLY(WITHOUT VALVE)	
FR0A	FR5A20AL (45 LPM , 350bar)	

Y	SELECTION FOR G PORT	
N	WITHOUT PORT	

Z	BODY MATERIAL	
A	HIGH-STRENGTH ALUMINUM	
S	DUCTILE IRON	