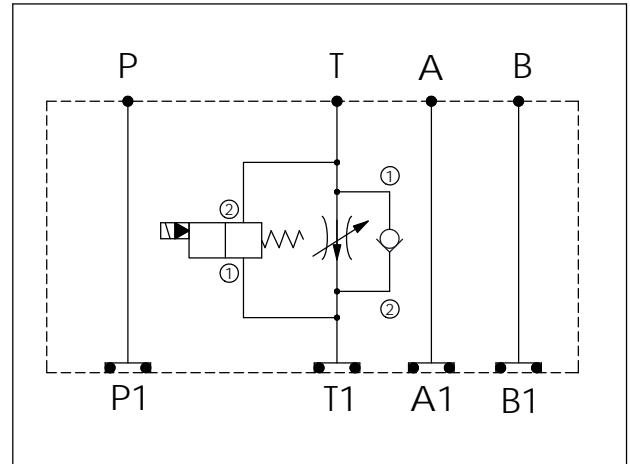


Ordering Code:	<b>MH05FTD-X-Y-Z 01</b>
Stack Height :	49.5mm

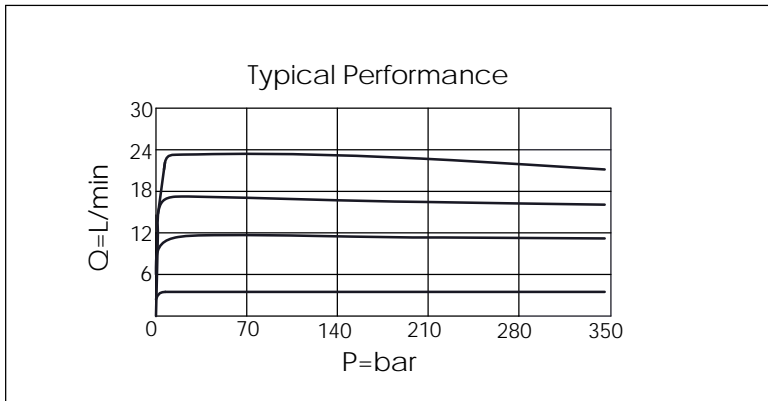
  

UNIT:mm



TECHNICAL DATA	
Aluminum Body Pressure Rating:	250 bar
Ductile Iron Body Pressure Rating:	350 bar
Rated flow:	23 l/min (Pressure Compensated)
Cartridge Valve:	Refer to FR13A-X-Y-Z EP08W-X-Y-Z
* Refer to Winner Cartridge Valves Catalog.	
Aluminum	0.61 kg(WITHOUT VALVES) 0.84 kg(INCLUDE VALVES ,WITHOUT COIL)

\* If you need the special specification. Please contact us.



X	SELECTION FOR FLOW CONTROL	
<b>13A2</b>	CAVITY ONLY(WITHOUT VALVE)	
<b>FR0A</b>	FR13A20AL(23LPM,350bar)	

Y	SELECTION FOR SOLENOID VALVES (REFER TO EP08W-X-Y-Z)	
<b>08W2</b>	CAVITY ONLY(WITHOUT VALVE)	
<b>EP01</b>	EP08W2A01N05 , 40LPM,350bar (NORMALLY CLOSED,WITHOUT COIL)	
<b>EP02</b>	EP08W2A02N05 , 40LPM,350bar (NORMALLY OPEN,WITHOUT COIL)	
<b>EP01M</b>	EP08W2A01M05 , 40LPM,350bar(NORMALLY CLOSED WITH KNOB STYLE MANUAL OVERRIDE,WITHOUT COIL)	
<b>EP02P</b>	EP08W2A02P05 , 40LPM,350bar(NORMALLY OPEN WITH PUSH STYLE MANUAL OVERRIDE,WITHOUT COIL)	

COIL MUST BE ORDERED SEPARATELY  
(REFER TO EC-04W-X-Y-Z)

Z	BODY MATERIAL	
<b>A</b>	HIGH-STRENGTH ALUMINUM	