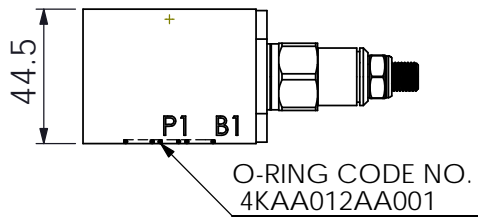
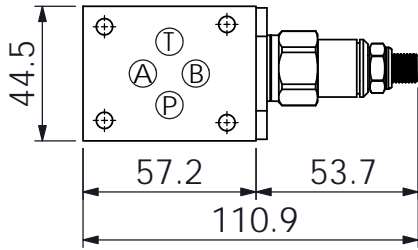
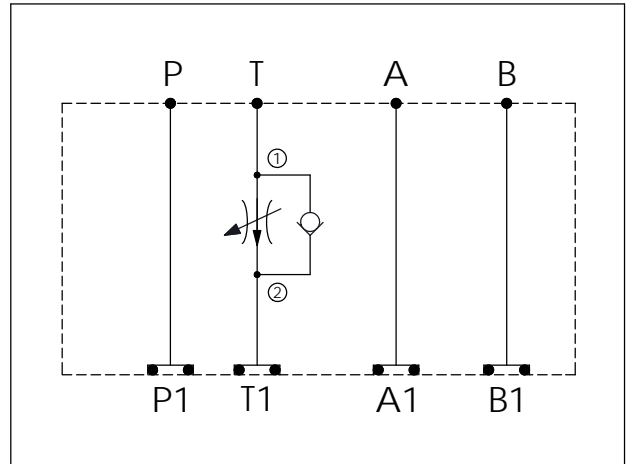
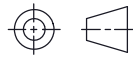


Ordering Code: **MH03FTW-X-Y-Z01**  
 Stack Height : 44.5mm



UNIT:mm



### TECHNICAL DATA

Aluminum Body Pressure Rating: 250 bar  
 Ductile Iron Body Pressure Rating: 350 bar

Rated flow: 23 l/min  
 (Pressure Compensated)

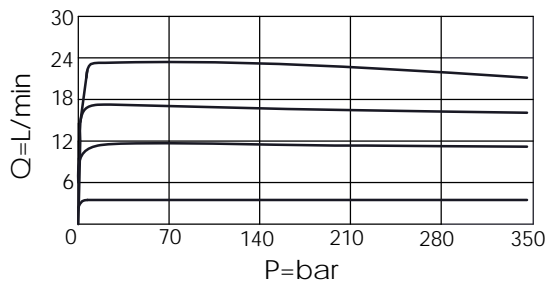
Cartridge Valve:  
 Refer to FR13A-X-Y-Z

\* Refer to Winner Cartridge Valve Catalog.

Aluminum	0.27 kg(WITHOUT VALVE)
	0.45 kg(INCLUDE VALVE)

\* If you need the special specification.  
 Please contact us.

Typical Performance



### X SELECTION FOR T PORT CONTROL

<b>13A2</b>	CAVITY ONLY(WITHOUT VALVE)
<b>FR0A</b>	FR13A20AL(23LPM,350bar)

### Y SELECTION FOR G PORT

**N** WITHOUT PORT

### Z BODY MATERIAL

**A** HIGH-STRENGTH ALUMINUM