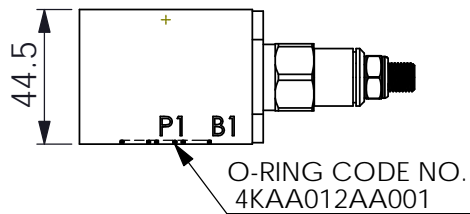
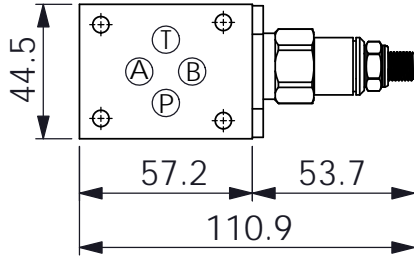
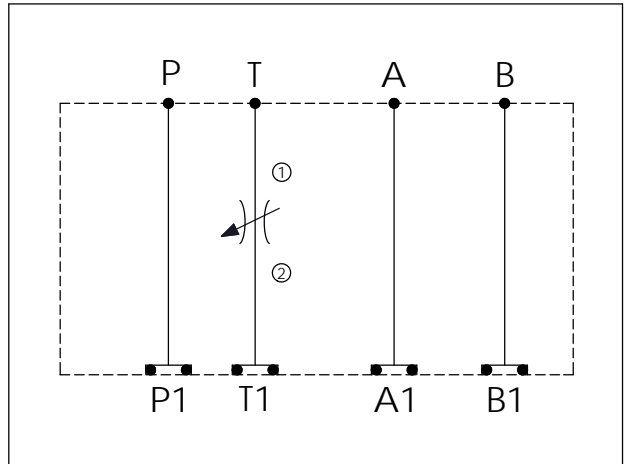
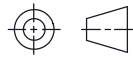


## ISO 03 SANDWICH MANIFOLD

Ordering Code:	<b>MH03FTW-X-Y-Z01</b>
Stack Height :	44.5mm



UNIT:mm



### TECHNICAL DATA

Aluminum Body Pressure Rating: 250 bar  
 Ductile Iron Body Pressure Rating: 350 bar

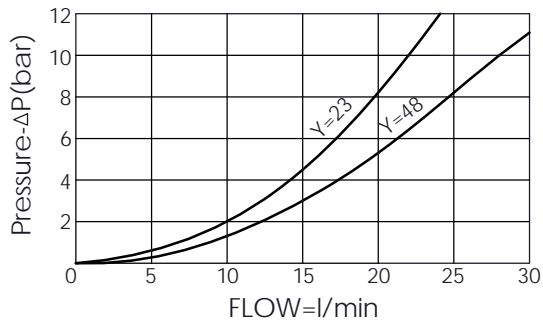
Rated flow: 40 l/min

Cartridge Valve:  
 Refer to NV13A-X-Y-Z  
 \* Refer to Winner Cartridge Valve Catalog.

Aluminum	0.27 kg(WITHOUT VALVE)
	0.45 kg(INCLUDE VALVE)

\* If you need the special specification. Please contact us.

FULLY OPEN RESTRICTOR-FLOW IN BOTH DIRECTIONS



### X SELECTION FOR T PORT CONTROL

**13A2** CAVITY ONLY(WITHOUT VALVE)

**NV48** NV13A2048L (350bar)

### Y SELECTION FOR G PORT

**N** WITHOUT PORT

### Z BODY MATERIAL

**A** HIGH-STRENGTH ALUMINUM