

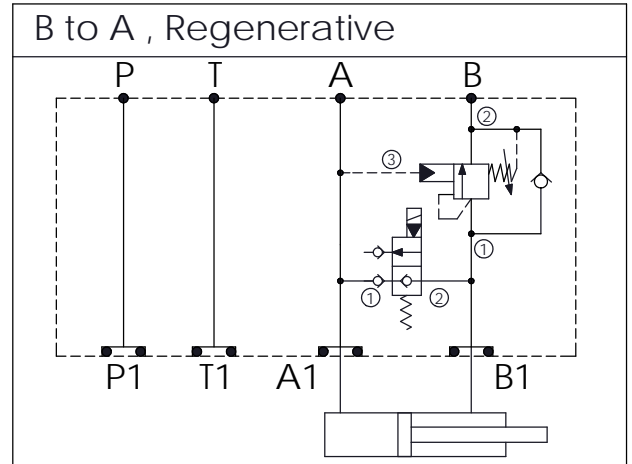
Ordering Code:	MH03GBE-X-Y-Z01
Stack Height :	44.5mm

Dimensions: 82.6, 57.2, 63.5, 203.3, 44.5

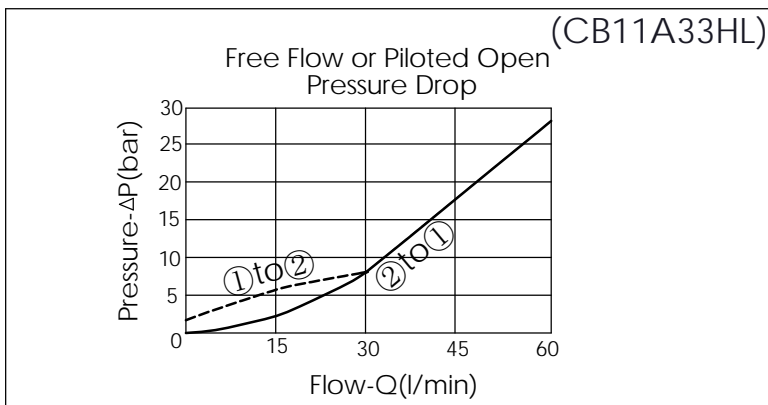
Ports: A, B, P, T, A1, P1, B1

O-RING CODE NO. 4KAA012AA001

UNIT:mm



TECHNICAL DATA	
Aluminum Body Pressure Rating:	250 bar
Ductile Iron Body Pressure Rating:	350 bar
Rated flow:	40 l/min
Cartridge Valve:	Refer to EP19E-X-Y-Z CB11A-X-Y-Z
* Refer to Winner Cartridge Valves Catalog.	
Aluminum	0.43 kg(WITHOUT VALVES) 0.72 kg(INCLUDE VALVES ,WITHOUT COIL)
Ductile Iron	1.24 kg(WITHOUT VALVES) 1.53 kg(INCLUDE VALVES ,WITHOUT COIL)
* If you need the special specification. Please contact us.	



Y	SELECTION FOR COUNTERBALANCE VALVE	
11A3	CAVITY ONLY(WITHOUT VALVE)	
CB3H	CB11A33HL (60LPM , 70-280bar)	

X	SELECTION FOR SOLENOID VALVES (REFER TO EP19E-X-Y-Z)	
19E2	CAVITY ONLY(WITHOUT VALVE)	
EP11	EP19E2A11N05 , 40LPM,350bar (NORMALLY CLOSED,WITHOUT COIL)	
EP11M	EP19E2A11M05 , 40LPM,350bar(NORMALLY CLOSED WITH KNOB STYLE MANUAL OVERRIDE,WITHOUT COIL)	
COIL MUST BE ORDERED SEPARATELY (REFER TO EC-04W-X-Y-Z)		

Z	BODY MATERIAL	
A	HIGH-STRENGTH ALUMINUM	
S	DUCTILE IRON	