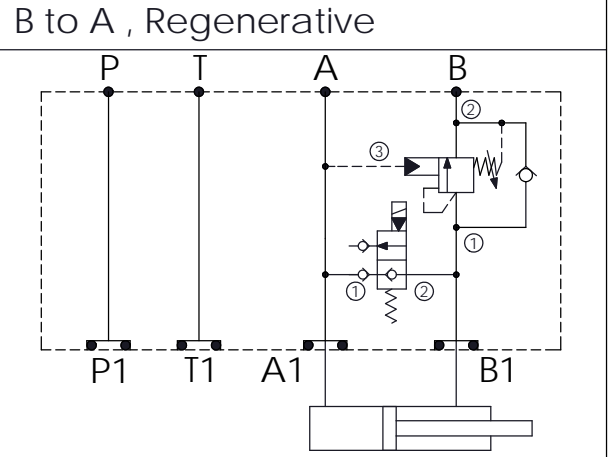


ISO 05 SANDWICH MANIFOLD

Ordering Code: **MH05GBE-X-Y-Z01**

Stack Height : 49.5mm

UNIT:mm



TECHNICAL DATA

Aluminum Body Pressure Rating: 250 bar

Ductile Iron
Body Pressure Rating: 350 bar

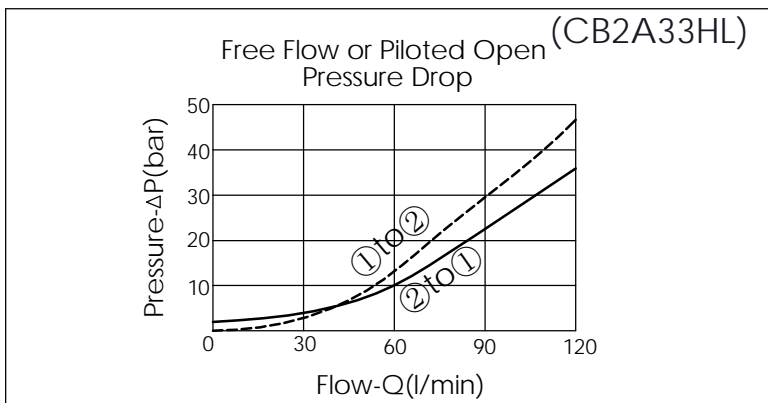
Rated flow: 80 l/min

Cartridge Valve:
Refer to EP17E-X-Y-Z
CB2A-X-Y-Z

* Refer to Winner Cartridge Valves Catalog.

Aluminum	0.84 kg(WITHOUT VALVES) 1.36 kg(INCLUDE VALVES ,WITHOUT COIL)
Ductile Iron	2.44 kg(WITHOUT VALVES) 2.96 kg(INCLUDE VALVES ,WITHOUT COIL)

* If you need the special specification.
Please contact us.



X	SELECTION FOR SOLENOID VALVES (REFER TO EP17E-X-Y-Z)	
17E2	CAVITY ONLY(WITHOUT VALVE)	
EP11	EP17E2A11N05 , 70LPM,350bar (NORMALLY CLOSED,WITHOUT COIL)	
EP11M	EP17E2A11M05 , 70LPM,350bar(NORMALLY CLOSED WITH KNOB STYLE MANUAL OVERRIDE,WITHOUT COIL)	

COIL MUST BE ORDERED SEPARATELY
(REFER TO EC-04W-X-Y-Z)

Y	SELECTION FOR COUNTERBALANCE VALVE	
2A3	CAVITY ONLY(WITHOUT VALVE)	
CB3H	CB2A33HL (120LPM , 70-280bar)	

Z	BODY MATERIAL	
A	HIGH-STRENGTH ALUMINUM	
S	DUCTILE IRON	