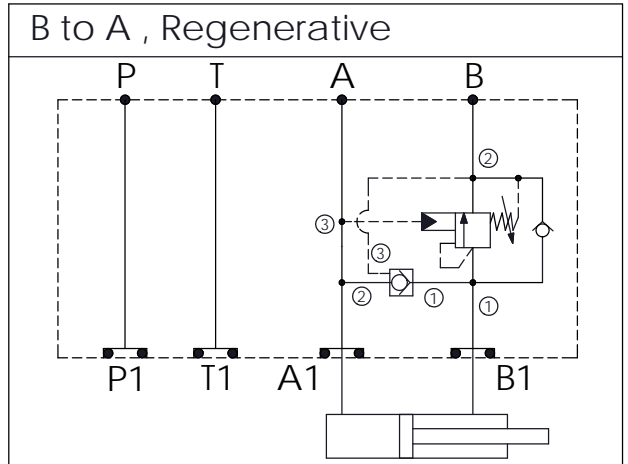


ISO 03 SANDWICH MANIFOLD

Ordering Code: **MH03GBW-X-Y-Z01**

Stack Height : 44.5mm

UNIT:mm



TECHNICAL DATA

Aluminum Body Pressure Rating: 250 bar
 Ductile Iron Body Pressure Rating: 350 bar

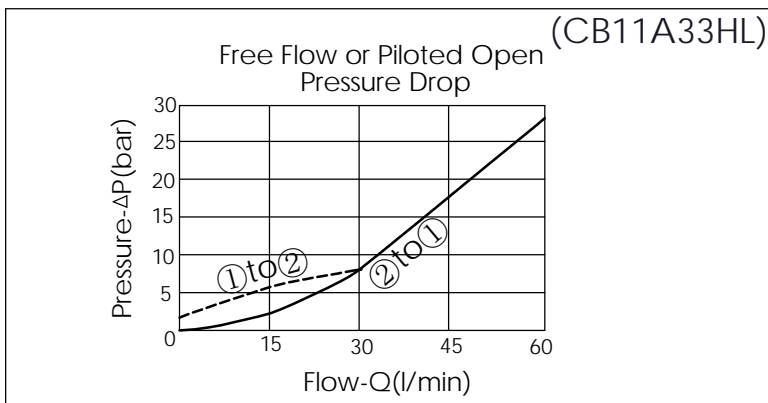
Rated flow: 40 l/min

Cartridge Valve:
 Refer to CC11A-X-Y-Z
 CB11A-X-Y-Z

* Refer to Winner Cartridge Valves Catalog.

Aluminum	0.5 kg(WITHOUT VALVES) 0.9 kg(INCLUDE VALVES)
Ductile Iron	1.35 kg(WITHOUT VALVES) 1.75 kg(INCLUDE VALVES)

* If you need the special specification. Please contact us.



X	SELECTION FOR PILOT-TO-CLOSE VALVE	
11A3	CAVITY ONLY(WITHOUT VALVE)	
CC50	CC11A3050N (80LPM , 5.0bar)	

Y	SELECTION FOR COUNTERBALANCE VALVE	
11A3	CAVITY ONLY(WITHOUT VALVE)	
CB3H	CB11A33HL (60LPM , 70-280bar)	

Z	BODY MATERIAL	
A	HIGH-STRENGTH ALUMINUM	
S	DUCTILE IRON	