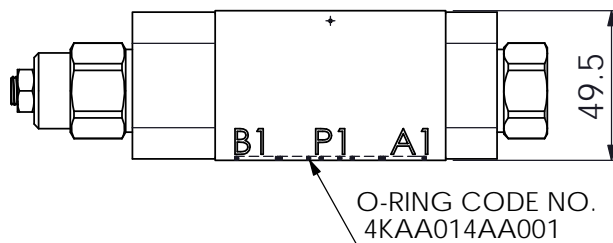
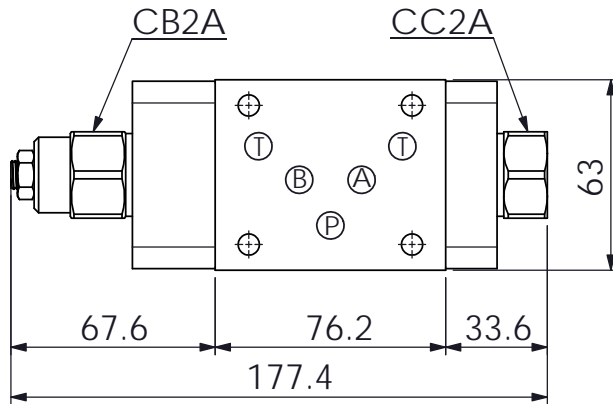
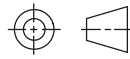


Ordering Code: **MH05GBW-X-Y-Z 01**

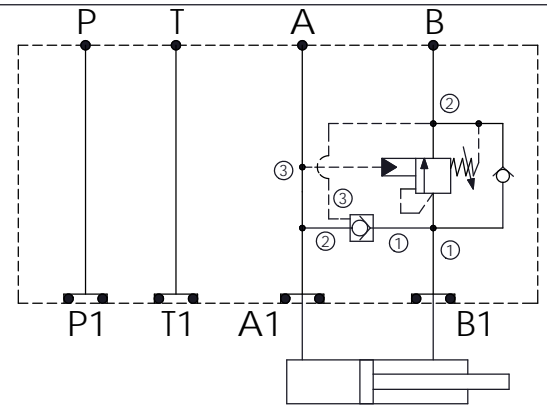
Stack Height : 49.5mm



UNIT:mm



B to A , Regenerative



TECHNICAL DATA

Aluminum Body Pressure Rating: 250 bar
 Ductile Iron Body Pressure Rating: 350 bar

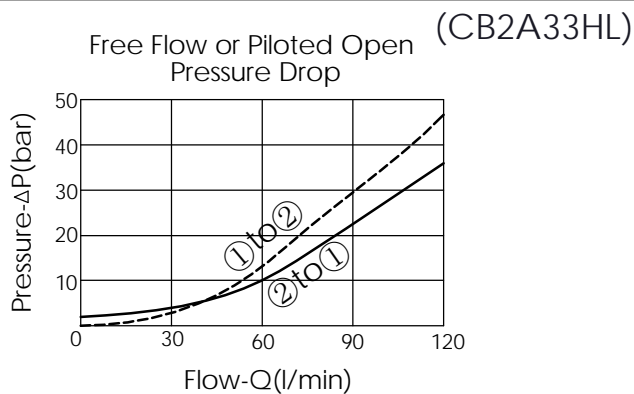
Rated flow: 80 l/min

Cartridge Valve:
 Refer to CC2A-X-Y-Z
 CB2A-X-Y-Z

* Refer to Winner Cartridge Valves Catalog.

Aluminum	0.76 kg(WITHOUT VALVES) 1.29 kg(INCLUDE VALVES)
Ductile Iron	2.25 kg(WITHOUT VALVES) 2.75 kg(INCLUDE VALVES)

* If you need the special specification. Please contact us.



X	SELECTION FOR PILOT-TO-CLOSE VALVE
2A3	CAVITY ONLY(WITHOUT VALVE)
CC50	CC2A3050N (160LPM , 5.0bar)

Y	SELECTION FOR COUNTERBALANCE VALVE
2A3	CAVITY ONLY(WITHOUT VALVE)
CB3H	CB2A33HL (120LPM , 70-280bar)

Z	BODY MATERIAL
A	HIGH-STRENGTH ALUMINUM
S	DUCTILE IRON