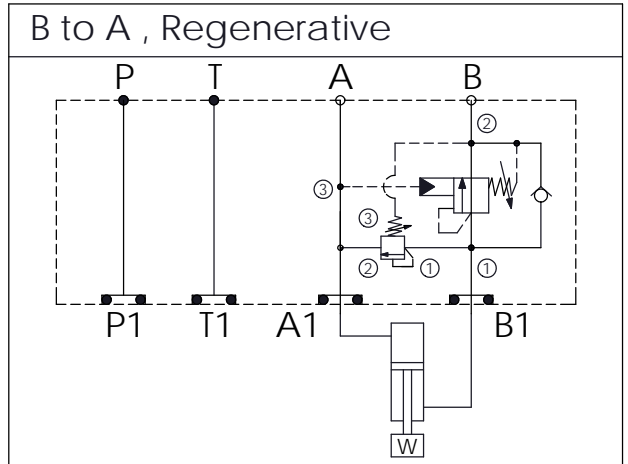


Ordering Code: **MH05GBW-X-Y-Z 01**

Stack Height : 49.5mm

UNIT:mm



TECHNICAL DATA

Aluminum Body Pressure Rating: 250 bar
 Ductile Iron Body Pressure Rating: 350 bar

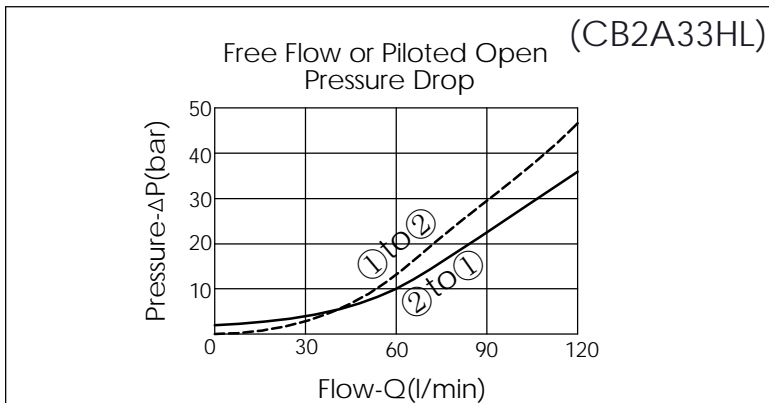
Rated flow: 80 l/min

Cartridge Valve:
 Refer to SD2A-X-Y-Z
 CB2A-X-Y-Z

* Refer to Winner Cartridge Valves Catalog.

Aluminum	0.76 kg(WITHOUT VALVES) 1.41 kg(INCLUDE VALVES)
Ductile Iron	2.25 kg(WITHOUT VALVES) 2.9 kg(INCLUDE VALVES)

* If you need the special specification. Please contact us.



X	SELECTION FOR PILOT-TO-CLOSE VALVE	
2A3	CAVITY ONLY(WITHOUT VALVE)	
SD0A	SD2A30AL (120LPM , 35-210bar)	
SD0B	SD2A30BL (120LPM , 20-105bar)	

Y	SELECTION FOR COUNTERBALANCE VALVE	
2A3	CAVITY ONLY(WITHOUT VALVE)	
CB3H	CB2A33HL (120LPM , 70-280bar)	

Z	BODY MATERIAL	
A	HIGH-STRENGTH ALUMINUM	
S	DUCTILE IRON	