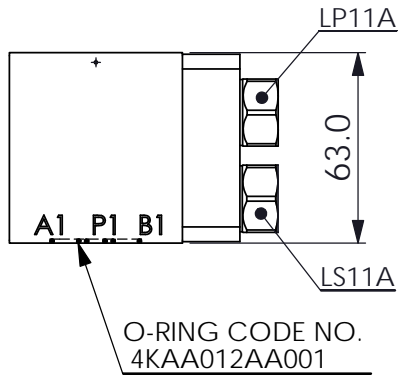
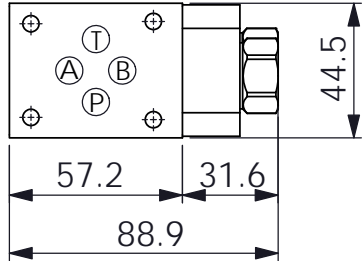
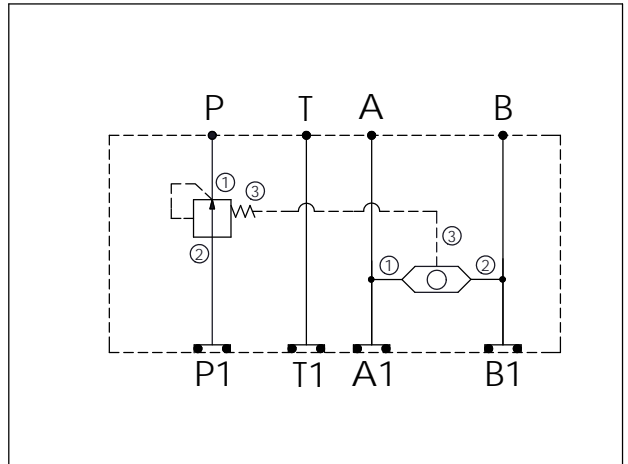
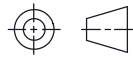


Ordering Code: MH03KPR-X-Y-Z 03
Stack Height : 63.0mm



UNIT:mm



TECHNICAL DATA

Aluminum Body Pressure Rating: 250 bar
 Ductile Iron Body Pressure Rating: 350 bar

Rated flow: 40 l/min

Cartridge Valve:
 Refer to LP11A-X-Y-Z
 LS11A-X-Y-Z

* Refer to Winner Cartridge Valves Catalog.

Aluminum	0.45 kg(WITHOUT VALVES) 0.75 kg(INCLUDE VALVES)
Ductile Iron	1.3 kg(WITHOUT VALVES) 1.6 kg(INCLUDE VALVES)

* If you need the special specification. Please contact us.

--

Y	SELECTION FOR SHUTTLE VALVE	
11A3	CAVITY ONLY(WITHOUT VALVE)	
LS3N	LS11A33NN(10LPM,350bar)	

X	SELECTION FOR LOGIC ELEMENT	
11A3	CAVITY ONLY(WITHOUT VALVE)	
LP35	LP11A3035N(60LPM,3.5bar)	
LP70	LP11A3070N(60LPM,7.0bar)	
LP100	LP11A30100N(60LPM,10.0bar)	
LP140	LP11A30140N(60LPM,14.0bar)	

Z	BODY MATERIAL	
A	HIGH-STRENGTH ALUMINUM	
S	DUCTILE IRON	